



# Frailty in very old critically ill patients in Australia and New Zealand: a population-based cohort study

Jai N Darvall<sup>1,2</sup>, Rinaldo Bellomo<sup>2,3</sup>, Eldho Paul<sup>4</sup>, Ashwin Subramaniam<sup>5,6</sup>, John D Santamaria<sup>7</sup> , Sean M Bagshaw<sup>8</sup>, Sumeet Rai<sup>9,10</sup>, Ruth E Hubbard<sup>11</sup>, David Pilcher<sup>12,13</sup> 

**The known:** Frailty in older critically ill patients is associated overseas with poorer health outcomes.

**The new:** Frailty is common in Australian and New Zealand ICUs, affecting 39.7% of patients more than 80 years of age for whom frailty data were available. Frailty in these patients is associated with increased likelihood of death in hospital and of new admission of survivors to nursing home or chronic care facilities.

**The implications:** Intensive care and community health care planning needs to take into account that by 2030 more than one-quarter of patients in Australian ICUs will be aged 80 years or more.

The number of older Australians will increase significantly over the next two decades; by 2036, the number of people aged 85 years or more will have doubled to one million.<sup>1</sup> The demographic character of hospitalised patients, particularly the critically ill, will consequently change. The mean age of patients in intensive care units (ICUs) in our region is climbing rapidly, and it is forecast that by 2030 26% of all people admitted to Australian ICUs will be aged 80 years or more.<sup>2</sup> This demographic change is likely to be accompanied by a shift in ICU practice, from a focus on managing patients with acute, reversible illnesses to caring for people, many near the end of life, with exacerbations of chronic disease.

One of the major challenges in caring for critically ill older people is frailty,<sup>3</sup> a multidimensional syndrome characterised by reduced capacity to deal with external stressors. Frailty is common among critically ill older people; more than 40% of ICU patients over 80 are frail.<sup>4</sup> Frailty in people with critical illness is associated with particularly poor outcomes: it doubles the risks of death and functional dependence, significantly increases health care use, and reduces quality of life.<sup>3,5,6</sup> Neither the prevalence of frailty among older ICU patients nor the implications of our ageing populations for ICU resourcing and outcomes for frail older patients have been comprehensively explored in our region.

Accordingly, we conducted a multicentre retrospective cohort study of older patients in more than one hundred ICUs in Australia and New Zealand. We describe the demographic features and the admission characteristics and outcomes for frail ICU patients aged 80 years or more. We hypothesised that mortality would be greater among frail than non-frail patients, and that a larger proportion would be discharged to residential care rather than home.

## Methods

We conducted a retrospective population-based cohort study, analysing data from the Australian and New Zealand Intensive Care

## Abstract

**Objective:** To explore associations between frailty (Clinical Frailty Scale score of 5 or more) in very old patients in intensive care units (ICUs) and their clinical outcomes (mortality, discharge destination).

**Design, setting and participants:** Retrospective population cohort analysis of Australian and New Zealand Intensive Care Society (ANZICS) Adult Patient Database data for all patients aged 80 years or more admitted to participating ICUs between 1 January 2017 and 31 December 2018.

**Main outcome measures:** Primary outcome: in-hospital mortality; secondary outcomes: length of stay (hospital, ICU), re-admission to ICU during the same hospital admission, discharge destination (including new chronic care or nursing home admission).


**Results:** Frailty status data were available for 15 613 of 45 773 patients aged 80 years or more admitted to 178 ICUs (34%); 6203 of these patients (39.7%) were deemed frail. A smaller proportion of frail than non-frail patients were men (47% v 57%), the mean illness severity scores of frail patients were slightly higher than those of non-frail patients, and they were more frequently admitted from the emergency department (28% v 21%) or with sepsis (12% v 7%) or respiratory complications (16% v 12%). In-hospital mortality was higher for frail patients (17.6% v 8.2%; adjusted odds ratio [OR], 1.87 [95% CI, 1.65–2.11]). Median lengths of ICU and hospital stay were slightly longer for frail patients, and they were more frequently discharged to new nursing home or chronic care (4.9% v 2.8%; adjusted OR, 1.61 [95% CI, 1.34–1.95]).

**Conclusions:** Many very old critically ill patients in Australia and New Zealand are frail, and frailty is associated with considerably poorer health outcomes. Routine screening of older ICU patients for frailty could improve outcome prediction and inform intensive care and community health care planning.

Society (ANZICS) Adult Patient Database, which includes data on more than 80% of all admissions to ICUs in Australia and New Zealand.<sup>7</sup> Data was gathered by the ANZICS Centre for Outcome and Resource Evaluation, which manages a clinical registry of participating ICUs for benchmarking purposes. Data dictionary use and automated validity checks were obligatory, and ongoing training and quality assurance review was provided for data abstractors.

All patients aged 80 years or more when admitted to an ICU between 1 January 2017 and 31 December 2018 were included in the study. Patients were excluded if they had been admitted to an ICU for organ donation or palliative care only. Only the first ICU admission during a hospital stay was included. Demographic data collected during ICU admission included age, sex, height, weight, admission diagnosis, limitations of medical treatment (because of patient wishes or medical futility; eg, not for intubation or cardiopulmonary resuscitation), Acute Physiology and Chronic Health Evaluation (APACHE) II and III-j illness

<sup>1</sup> Royal Melbourne Hospital, Melbourne, VIC. <sup>2</sup> Centre for Integrated Critical Care, University of Melbourne, Melbourne, VIC. <sup>3</sup> Austin Hospital, Melbourne, VIC. <sup>4</sup> Monash University, Melbourne, VIC. <sup>5</sup> Peninsula Health, Melbourne, VIC. <sup>6</sup> Peninsula Clinical School, Monash University, Melbourne, VIC. <sup>7</sup> St Vincent's Hospital Melbourne, Melbourne, VIC. <sup>8</sup> University of Alberta, Edmonton, AB, Canada. <sup>9</sup> ANU Medical School, Australian National University, Canberra, ACT. <sup>10</sup> Canberra Hospital, Canberra, ACT. <sup>11</sup> Centre for Health Services Research, University of Queensland, Brisbane, QLD. <sup>12</sup> The Alfred Hospital, Melbourne, VIC. <sup>13</sup> Centre for Outcome and Resource Evaluation, Australian and New Zealand Intensive Care Society, Melbourne, VIC.

 jai.darvall@mh.org.au • doi: 10.5694/mja2.50329 • See Editorial (Mudge).

severity scores,<sup>8</sup> and Australian and New Zealand Risk of Death (ANZROD) scores.<sup>9</sup>

### Frailty assessment

Frailty was measured with a modified version of the Canadian Study of Health and Aging Clinical Frailty Scale, a judgement-based nine-point categorical scale found to be valid and reliable for assessing frailty in a variety of populations, including critically ill patients.<sup>3,10</sup> The eight-point Clinical Frailty Scale (CFS), the most used frailty measure in ICUs,<sup>11</sup> categorises patients as CFS 1 (very fit), CFS 2 (well), CFS 3 (managing well), CFS 4 (vulnerable), CFS 5 (mildly frail), CFS 6 (moderately frail), CFS 7 (severely frail), or CFS 8 (very severely frail).<sup>10</sup> We dichotomised scores according to accepted definitions, defining patients as frail (CFS 5–8) or non-frail (CFS 1–4).<sup>3</sup> Since 2017, frailty has been a non-mandatory variable measured at the time of ICU admission, depending on the patient's level of physical function in the two months preceding admission. Scores were assigned by data collectors in each participating ICU from the clinical record; no specific education in CFS measurement was provided.

### Statistical analysis

Results are reported as counts (with proportions), means (with standard deviations [SDs]), or medians (with interquartile ranges [IQRs]); comparisons of data for frail and non-frail patients employed  $\chi^2$  tests for binary and categorical data, two-sample *t* tests for normally distributed data, and Wilcoxon rank-sum tests for non-normally distributed continuous data. Sensitivity analyses assessed the association between frailty and mortality, with sites assigned to three groups according to completeness of coding for frailty (< 10%, 10–50%, > 50%).

The primary outcome was in-hospital mortality; secondary outcomes were length of stay (in hospital, in the ICU), re-admission to the ICU during the same hospital admission, and discharge destination (including new chronic care or nursing home admission). Unadjusted and adjusted associations between frailty status and in-hospital mortality were examined by mixed effects logistic regression, and results reported as odds ratios (OR) with 95% confidence intervals (CIs); associations between frailty status and discharge to a new nursing home or chronic care facility were assessed for patients who left hospital alive. All multivariable analyses were adjusted for region, sex, hospital type, and severity of illness (estimated with the ANZROD model),<sup>9,12</sup> with patients clustered by site, and site treated as a random effect. ANZROD is a locally derived mortality prediction model that includes age, diagnosis, acute physiological disturbance, chronic comorbid conditions, and treatment limitations as factors, and applies separate regression equations for each major diagnostic group. It accurately predicts mortality of Australian and New Zealand ICU patients, and is well calibrated and has good discrimination (area under the receiver operating characteristic curve greater than 0.9 when applied to the entire ICU population).<sup>7</sup> Statistical analyses were performed in Stata 15.1 (StataCorp) and SAS 9.4 (SAS Institute).

### Ethics approval

Ethics approval was provided by The Alfred Hospital Human Research Ethics Committee (HREC number 584/18).

### Results

A total of 45 773 eligible patients aged 80 years or more were admitted to 178 ICUs during the study period; frailty scores

were available for 15 613 patients from 131 ICUs (34.1%) (Box 1). The median age of the included patients was 84.6 years (IQR, 82.1–87.8 years); 8247 (52.8%) were men (Box 2). The median age and illness severity of the 30 160 patients without recorded frailty scores were similar to those for the patients with frailty scores; median length of ICU stay was also similar, but median length of hospital stay was slightly longer (9.7 days [IQR, 5.6–17 days] *v* 9.2 h [IQR, 5.4–5.9 days]) and mortality higher (7.1% *v* 6.3%) for patients without frailty scores (Supporting Information, table 1).

In total, 6203 patients (39.7%; 95% CI, 39.0–40.5%) were classified as frail (Box 3); the median frailty score was 4 (IQR, 3–5). The proportion of patients classified as frail increased with age; 2813 of 8389 patients aged 80–84 years (33.5%) were frail, but 203 of 329 patients aged 95 or more years (61.7%) (Box 4). The 15 613 frail very old patients comprised 6.1% of the 102 102 patients with known frailty status admitted to the 131 ICUs contributing frailty data (after study exclusions, such as re-admissions and palliative admissions).

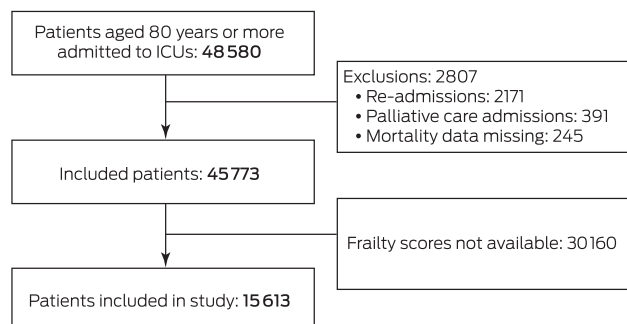
The median age of frail patients (85.5 years; IQR, 82.8–89.0 years) was higher than that of non-frail patients (84.0 years; IQR, 81.8–87.0 years); a smaller proportion were men (47% *v* 57%), their mean illness severity scores were slightly higher, and a larger proportion had treatment limitations on admission to the ICU (33% *v* 11%) (Box 2). Frail patients were more frequently admitted to ICU from emergency departments (28% *v* 21%) and less frequently after elective surgery (27% *v* 46%) than non-frail patients (Box 2). Larger proportions of frail patients were admitted with sepsis (12% *v* 7%) or respiratory complications (16% *v* 12%), and a smaller proportion after cardiac surgery (3% *v* 10%) (Box 5).

### Outcomes

Unadjusted mortality was higher among frail than non-frail patients, both for in-ICU (9.0% *v* 4.5%; *P* < 0.001) and all in-hospital deaths (17.6% *v* 8.2%; *P* < 0.001; unadjusted OR, 2.40; 95% CI, 2.17–2.64) (Box 5). In our multivariable analysis, frailty was significantly associated with in-hospital mortality after adjusting for sex, baseline severity of illness, and variation between regions and hospital types (adjusted OR, 1.87; 95% CI, 1.65–2.11) (Box 6). Frailty was also associated with higher mortality in sensitivity analyses in which sites were grouped by completeness of frailty coding (Supporting Information, table 5).

Rates of ICU re-admission were similar for frail and non-frail patients (4.4% *v* 4.1%); mean lengths of ICU and hospital stay were slightly longer for frail than non-frail patients, and frail patients

#### 1 Selection of intensive care unit (ICU) patients for inclusion in our analysis

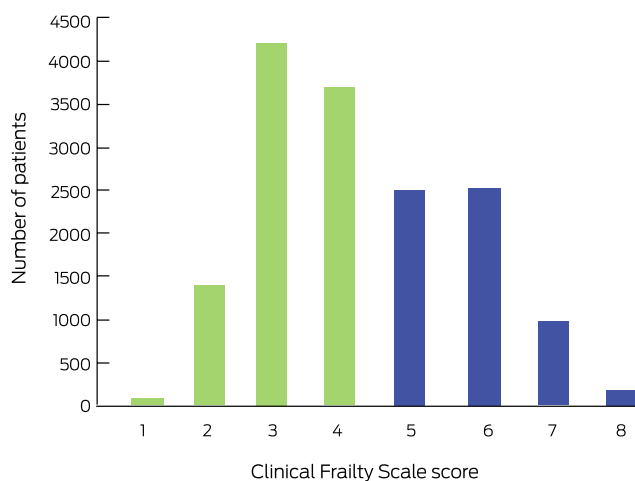


**2 Baseline demographic characteristics of intensive care unit (ICU) patients included in study, by frailty status**

Characteristic	All patients	Frail patients	Non-frail patients
Number	15 613	6203	9410
Age (years), median (IQR)	84.6 (82.1–87.8)	85.5 (82.8–89.0)	84.0 (81.8–87.0)
Sex (men)	8247 (52.8%)	2917 (47.0%)	5330 (56.6%)
APACHE II score, median (IQR)	16 (13–20)	17 (14–22)	15 (12–19)
APACHE III-j score, median (IQR)	58 (48–71)	62 (51–75)	56 (46–67)
ANZROD, median (IQR)	4.8% (1.6–16.2%)	9.2% (2.9–25.1%)	3.2% (1.2–10.3%)
ANZROD, mean (SD)	13.1% (18.8%)	17.9% (20.9%)	10.0% (16.5%)
Treatment limitations on admission	3013 (19.9%)	2039 (33.0%)	1064 (11.3%)
One or more chronic disease	5404 (34.6%)	2688 (43.3%)	2716 (28.9%)
Two or more chronic disease	1539 (9.9%)	850 (13.7%)	689 (7.3%)
Admission type			
Non-surgical	6878 (44.1%)	3330 (53.7%)	3548 (37.7%)
Elective surgical (planned ICU admission)	5988 (38.4%)	1683 (27.1%)	4305 (45.8%)
Emergency surgical	2747 (17.6%)	1190 (19.2%)	1557 (16.5%)
Hospital admission source			
Home	12 173 (81.4%)	4594 (75.5%)	7579 (85.5%)
Chronic care/palliative care/nursing home	476 (3.2%)	402 (6.6%)	74 (0.8%)
Transfer from other acute hospital	2153 (14.4%)	992 (16.3%)	1161 (13.1%)
Mental health	6 (< 0.1%)	4 (0.1%)	2 (< 0.1%)
Rehabilitation	138 (0.9%)	92 (1.5%)	46 (0.5%)
ICU admission source			
Operating theatre	8563 (55.4%)	2839 (45.8%)	5814 (61.8%)
Emergency department	3649 (23.4%)	1720 (27.7%)	1929 (20.5%)
Hospital ward	2554 (16.4%)	1320 (21.3%)	1234 (13.1%)
Direct transfer from other ICU	156 (1.0%)	54 (0.9%)	102 (1.1%)
Direct admission from other hospital	529 (3.4%)	243 (3.9%)	286 (3.0%)
Direct admission from home	72 (0.5%)	27 (0.4%)	45 (0.5%)

ANZROD = Australian and New Zealand Risk of Death; APACHE = Acute Physiology and Chronic Health Evaluation; IQR = interquartile range. ♦

**3 Distribution of Clinical Frailty Scale scores for 15 613 patients aged 80 years or more admitted to intensive care units in Australia and New Zealand, 2017–2018**

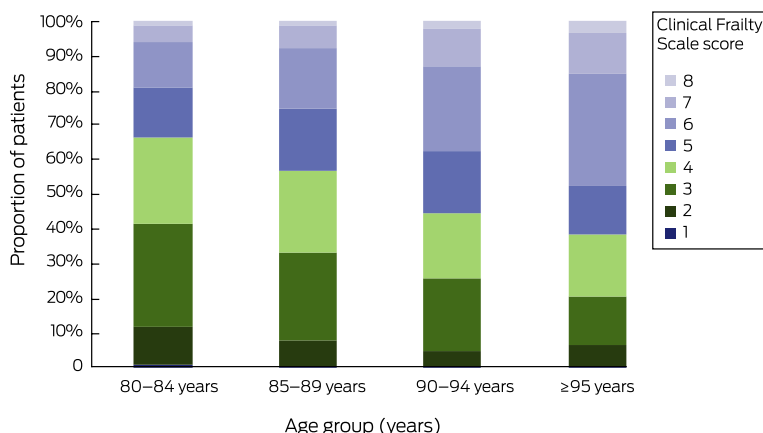


were more frequently discharged to a new nursing home or chronic care facility (4.9% *v* 2.8%) (Box 5). After adjusting for sex, baseline severity of illness, and variation between regions and hospital types, frailty in patients discharged alive from hospital was associated with an increased risk of discharge to new nursing home or chronic care (adjusted OR, 1.61; 95% CI, 1.34–1.95) (Box 6).

**Discussion**

We found that 39.7% of ICU patients in Australia and New Zealand aged 80 years or more are frail, or 6.1% of all adults admitted to ICUs. More than half these frail patients were women (53%); larger proportions of frail than non-frail patients were admitted to the ICU from emergency departments, or with sepsis or respiratory failure. Mortality among frail patients, after adjusting for sex, severity of illness, and regional and hospital variation, was almost twice as high as for non-frail patients, and frail patients were more frequently discharged to a new nursing home or chronic care admission than non-frail patients.

#### 4 Distribution of Clinical Frailty Scale scores, stratified by 5-year age groups



Number of patients: 80-84 years, 8389; 85-89 years, 5132; 90-94 years, 1763; 95 years or more, 329. ♦

hospital and community health care settings.<sup>9,20</sup> We have recently reported that the CFS can be used to measure frailty in critical ill patients across the spectrum of health domains, and its performance in ICU patients is comparable with that of comprehensive multidimensional frailty assessment tools.<sup>21</sup> Interest in using hospital coding data to generate automated frailty indexes is growing; for example, the Modified Frailty Index (mFI) was recently employed in a Brazilian study including more than 130 000 ICU patients.<sup>22</sup> Nine of 11 variables in the mFI, however, are comorbid conditions, and it does not include information on important domains of frailty, such as mobility impairment, malnutrition, and cognitive deficits. Before such screening tools can be adopted in ICUs, it is important that they are validated against accepted frailty scales.

#### Implications of our findings

We found that frailty is prevalent among critically ill patients aged 80 years or more in Australia and New

#### Comparison with earlier studies

The prevalence of frailty among our patients (39.7%) was comparable with that reported by a European study of 5000 ICU patients aged 80 years or more (43.1%),<sup>4</sup> the authors of the largest systematic review of frailty in critically ill adults (3030 patients aged 18 years or more) reported a lower pooled frailty prevalence (30%).<sup>13</sup> We found that frailty was more frequent among women than men (44.6% *v* 35.4%), as previously reported for various populations, including ICU patients;<sup>3,14</sup> various lifestyle, biological, and inflammatory factors have been invoked to explain this difference.<sup>15</sup>

Our adjusted odds ratio for in-hospital mortality (1.87) is similar to the in-hospital mortality relative risk reported by the large systematic review of frailty in adult ICU patients (1.71; 95% CI, 1.43-2.05).<sup>13</sup> Overall in-hospital mortality in our study (11.9%), however, was considerably lower than reported for other populations of critically ill older patients. In a 2014 study of 28 000 Victorian ICU patients aged 80 years or more, mortality was 24.1%;<sup>16</sup> in a 2009 study of 15 000 Australian and New Zealand ICU patients aged 80 years or more, it was 25%.<sup>17</sup> Mortality was 22.1% in a recent study of very old European ICU patients,<sup>4</sup> and 35% in a similar Canadian study.<sup>18</sup> The reason for the lower number of deaths in our study is unclear, but may be related to population differences (eg, the prevalence of sepsis was lower in our study than in other reports), the inclusion of patients with less severe illness (mean APACHE III score: our study, 61.3 *v* 2009 study, 67.5<sup>17</sup>), and recent improvements in ICU outcomes.

We found that the proportion of patients with limitations of medical treatment on admission was larger for frail than non-frail ICU patients, consistent with other studies,<sup>3,4,19</sup> suggesting that clinicians more frequently apply restricted goals of care to older critically ill patients who are frail.

Our finding that a greater proportion of frail than non-frail survivors of critical illness were discharged to residential care (7.6% *v* 3.1%) is consistent with the findings of the systematic review mentioned above (relative risk of home discharge [416 frail, 912 non-frail patients], 0.59; 95% CI, 0.49-0.71).<sup>13</sup> Our finding that the incidence of new residential care admission was higher for frail patients (4.9% *v* 2.8%), however, is novel.

The frailty measure we applied, the CFS, is the most employed frailty instrument in ICUs, and has been validated in a variety of

#### 5 Clinical characteristics and outcomes for 15 613 patients aged 80 years or more admitted to intensive care units (ICUs) in Australia and New Zealand, 2017-2018

Characteristic	Frail patients	Non-frail patients
Number	6203	9410
ICU diagnostic category		
Sepsis	742 (12.0%)	680 (7.2%)
Trauma	274 (4.4%)	357 (3.8%)
Cardiac surgery	196 (3.2%)	969 (10.3%)
Other cardiovascular	1148 (18.5%)	1739 (18.4%)
Respiratory	999 (16.1%)	1126 (12.0%)
Neurological	437 (7.0%)	885 (9.4%)
Gastrointestinal	1231 (19.8%)	1939 (20.6%)
Other	1176 (19.0%)	1715 (18.2%)
Re-admission to ICU	271 (4.4%)	382 (4.1%)
Length of stay (days), median (IQR)		
ICU	1.80 (0.93-3.31)	1.65 (0.90-2.97)
Hospital (including ICU)	10.0 (5.84-17.7)	8.86 (5.19-15.0)
Deaths		
ICU	554 (9.0%)	425 (4.5%)
Hospital (including ICU)	1090 (17.6%)	769 (8.2%)
Discharge destination		
Died	1090 (17.6%)	769 (8.2%)
Home	2831 (45.6%)	5604 (59.6%)
Nursing home/chronic care	472 (7.6%)	295 (3.1%)
New nursing home/chronic care	302 (4.9%)	267 (2.8%)
Rehabilitation	959 (15.5%)	1485 (15.8%)
Other hospital	789 (12.8%)	1177 (12.5%)
Other	62 (1.0%)	80 (1.0%)

IQR = interquartile range. ♦

## 6 Frailty and outcomes: summary of multivariable analyses

Analysis (frail v non frail patients)	Odds ratio (95% CI)	P	Area under receiver operating characteristic curve
In-hospital mortality (all patients)			
Univariable analysis	2.40 (2.17–2.64)	< 0.001	0.61 (0.60–0.62)
Multivariable analysis*	1.87 (1.65–2.11)	< 0.001	0.88 (0.88–0.89)
Discharge to new nursing home/chronic care (survivors only)			
Univariable analysis	1.96 (1.66–2.33)	< 0.001	0.58 (0.56–0.60)
Multivariable analysis*	1.61 (1.34–1.95)	< 0.001	0.82 (0.80–0.83)

\*Mixed effects logistic regression adjusted for sex, region, hospital type, and severity of illness (ANZROD) at admission to the intensive care unit, with site as random effect. Full models are presented in the Supporting Information, tables 2–4. ♦

Zealand, and that it is associated with higher rates of in-hospital mortality and discharge to residential care. That the risk of new residential care admission is 1.6 times as high for frail as for non-frail very old patients suggests that post-recovery impairment is greater for frail patients, a finding with major implications for health care and community resource planning for frail survivors of critical illness. We estimate that 9000 frail patients aged 80 years or more are admitted to participating ICUs in Australia and New Zealand each year, of whom 1600 die in hospital and 450 are discharged to new nursing home or chronic care.

### Strengths and limitations

Our study is the largest to have applied the Clinical Frailty Scale to very old critically ill patients, and the first large scale study of frailty in ICUs in Australia and New Zealand. The binational database upon which the study is based is large, and its data are regularly audited and validated, ensuring their high quality. However, we reviewed medical records to assign frailty scores, whereas previous CFS-based studies have interviewed patients or their relatives.<sup>3,10</sup> Inaccurate CFS scoring was therefore possible, although substantial inter-rater reliability in CFS scores assigned on the basis of ICU medical records has been reported.<sup>23</sup> Further, CFS scores based on chart review are comparable with

scores based on direct ICU patient interview;<sup>24</sup> the accuracy of retrospective CFS scores obtained in this manner, when compared with scores assigned after comprehensive geriatric medical assessments, has also been reported.<sup>25</sup>

A further limitation was that frailty status was not available for most ICU patients, as CFS reporting, a relatively recent addition to the ANZICS dataset, was not mandatory in the participating ICUs. However, differences in baseline characteristics and outcomes between patients with and without known frailty status were small and not clinically relevant. For example, overall in-hospital mortality (11.9% v 12.9%), median APACHE III scores (58 v 59), and Australian and New Zealand Risk of Death score (4.9 v 5.0) were all similar for patients with and without frailty scores, and the distributions of diagnostic categories were also similar (Supporting Information, table 1). Further, frailty was associated with higher in-hospital mortal-

ity both overall and when assessed in groups of ICUs classed by the degree of completeness of frailty score recording (except for ICUs with completion rates below 10%; however, the small proportions of patients with frailty data in these ICUs renders comparison difficult) (Supporting Information, table 5).

### Conclusion

A large proportion of very old critically ill patients in Australia and New Zealand are frail, and frailty is associated with considerably poorer health outcomes, including increased risks of in-hospital death or new admission to residential care. These findings have important public health implications. Routine screening of older ICU patients for frailty could improve outcome prediction and inform intensive care and community health care planning on discharge.

**Acknowledgements:** Sean Bagshaw is supported by a Canada Research Chair in Critical Care Nephrology.

**Competing interests:** No relevant disclosures.

Received 31 May 2019, accepted 31 July 2019 ■

© 2019 AMPCo Pty Ltd

- 1 Australian Bureau of Statistics. 3222.0. Population projections, Australia, 2017 (base) – 2066. Nov 2018. <https://www.abs.gov.au/AUSSTATS/abs@.nsf/mf/3222.0> (viewed July 2019).
- 2 Corke C, Leeuw E, Lo SK, George C. Predicting future intensive care demand in Australia. *Crit Care Resusc* 2009; 11: 257–260.
- 3 Bagshaw SM, Stelfox HT, McDermaid RC, et al. Association between frailty and short- and long-term outcomes among critically ill patients: a multicentre prospective cohort study. *CMAJ* 2014; 186: E95–E102.
- 4 Flaatten H, De Lange DW, Morandi A, et al; VIP1 study group. The impact of frailty on ICU and 30-day mortality and the level of care in very elderly patients (≥ 80 years). *Intensive Care Med* 2017; 43: 1820–1828.
- 5 Bagshaw SM, Stelfox HT, Johnson JA, et al. Long-term association between frailty and health-related quality of life among survivors of critical illness: a prospective multicenter cohort study. *Crit Care Med* 2015; 43: 973–982.
- 6 Hope AA, Gong MN, Guerra C, Wunsch H. Frailty before critical illness and mortality for elderly Medicare beneficiaries. *J Am Geriatr Soc* 2015; 63: 1121–1128.
- 7 Australian and New Zealand Intensive Care Society Centre for Outcome and Resource Evaluation. Adult Patient Database: activity report 2017/2018. Melbourne: ANZICS, 2019. <https://www.anzics.com.au/wp-content/uploads/2019/07/ANZICS-CORE-APD-Activity-Report-2017-18.pdf> (viewed July 2019).
- 8 Knaus WA, Wagner DP, Draper EA, et al. The APACHE III prognostic system. *Chest* 1991; 100: 1619–1636.
- 9 Paul E, Bailey M, Pilcher D. Risk prediction of hospital mortality for adult patients admitted to Australian and New Zealand intensive care units: development and validation of the Australian and New Zealand Risk of Death model. *J Crit Care* 2013; 28: 935–941.
- 10 Rockwood K, Song X, MacKnight C, et al. A global clinical measure of fitness and frailty in elderly people. *CMAJ* 2005; 173: 489–495.
- 11 Bagshaw M, Majumdar SR, Rolfson DB, et al. A prospective multicenter cohort study of frailty in younger critically ill patients. *Crit Care* 2016; 20: 175.
- 12 Pilcher D, Paul E, Bailey M, Huckson S. The Australian and New Zealand Risk of Death (ANZROD) model: getting mortality prediction right for intensive care units. *Crit Care Resusc* 2014; 16: 3–4.
- 13 Muscedere J, Waters B, Varambally A, et al. The impact of frailty on intensive care unit outcomes: a systematic review and meta-analysis. *Intensive Care Med* 2017; 43: 1105–1122.
- 14 Gordon EH, Peel NM, Samanta M, et al. Sex differences in frailty: a systematic review and meta-analysis. *Exp Gerontol* 2017; 89: 30–40.
- 15 Hubbard RE, Rockwood K. Frailty in older women. *Maturitas* 2011; 69: 203–207.
- 16 Duke GJ, Barker A, Knott CI, Santamaria JD. Outcomes of older people receiving intensive care in Victoria. *Med J Aust* 2014; 200: 323–326.

<https://www.mja.com.au/journal/2014/200/6/outcomes-older-people-receiving-intensive-care-victoria>

- 17 Bagshaw SM, Webb SA, Delaney A, et al. Very old patients admitted to intensive care in Australia and New Zealand: a multi-centre cohort analysis. *Crit Care* 2009; 13: R45.
- 18 Ball IM, Bagshaw SM, Burns KE, et al. Outcomes of elderly critically ill medical and surgical patients: a multicentre cohort study. *Can J Anaesth* 2017; 64: 260–269.
- 19 So RKL, Bannard-Smith J, Subbe CP, et al; METHOD study investigators. The association of clinical frailty with outcomes of patients reviewed by rapid response teams: an international prospective observational cohort study. *Crit Care* 2018; 22: 227.
- 20 Faller JW, Pereira DDN, de Souza S, et al. Instruments for the detection of frailty syndrome in older adults: a systematic review. *PLoS One* 2019; 14: e0216166.
- 21 Darvall JN, Greentree K, Braat MS, et al. Contributors to frailty in critical illness: multi-dimensional analysis of the Clinical Frailty Scale. *J Crit Care* 2019; 52: 193–199.
- 22 Zampieri FG, Iwashyna TJ, Vigiante EM, et al; ORCHESTRA Study Investigators. Association of frailty with short-term outcomes, organ support and resource use in critically ill patients. *Intensive Care Med* 2018; 44: 1512–1520.
- 23 Darvall JN, Boonstra T, Norman J, et al. Retrospective frailty determination in critical illness from review of the ICU clinical record. *Anaesth Intensive Care* 2019; 36: 1–6.
- 24 Shears M, Takaoka A, Rochweg B, et al; Canadian Critical Care Trials Group. Assessing frailty in the intensive care unit: a reliability and validity study. *J Crit Care* 2018; 45: 197–203.
- 25 Davies J, Whitlock J, Gutmanis I, Kane SL. Inter-rater reliability of the retrospectively assigned clinical frailty scale score in a geriatric outreach population. *Can Geriatr J* 2018; 21: 1–5. ■

## Supporting Information

Additional Supporting Information is included with the online version of this article.