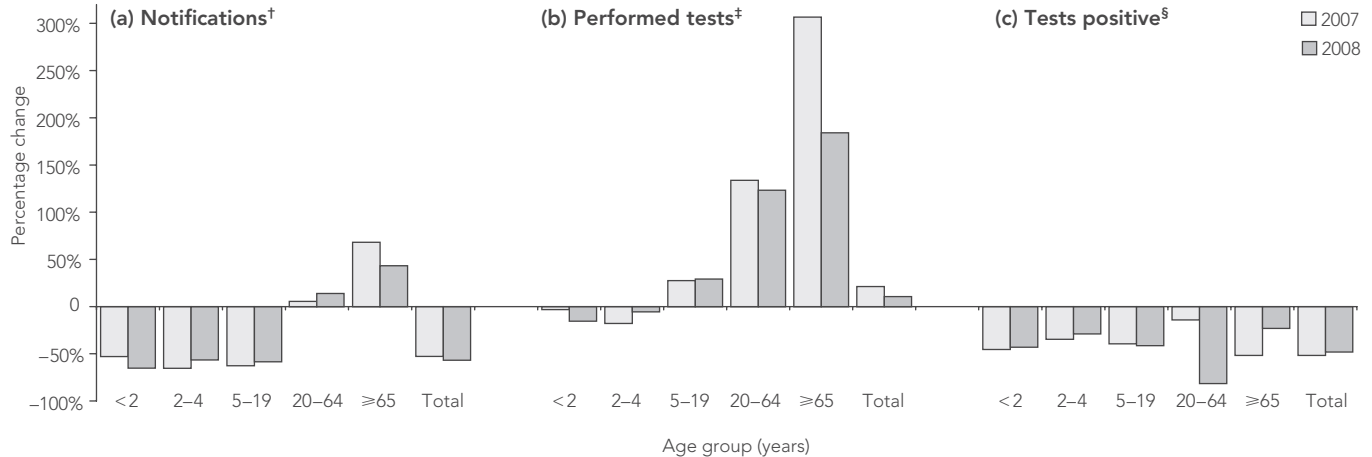


Correction

Incorrect figure: In “*Early evidence for direct and indirect effects of the infant rotavirus vaccine program in Queensland*” in the 3 August 2009 issue of the *Journal (Med J Aust 2009; 191: 157-160)*, there

was an error in Box 1 (*page 158*). Under “(a) Notifications”, the values for the 5–19-years and 20–64-years age groups should have been reversed. Box 1, with the corrected figure, is reproduced here. □

1 Percentage change in rotavirus notifications, tests performed* and tests positive* after introduction of a publicly funded infant rotavirus vaccination program in Queensland in July 2007



* Testing performed by Queensland Health Clinical and Statewide Services. † Percentage change in the number of rotavirus notifications in 2007 and 2008 compared with the number in 2006. ‡ Percentage change in the number of rotavirus tests performed in 2007 and 2008 compared with mean annual age group-specific values from 2000 to 2006. § Percentage change in the proportion of tests positive for rotavirus in 2007 and 2008 compared with age group-specific values from 2000 to 2006. ◆