



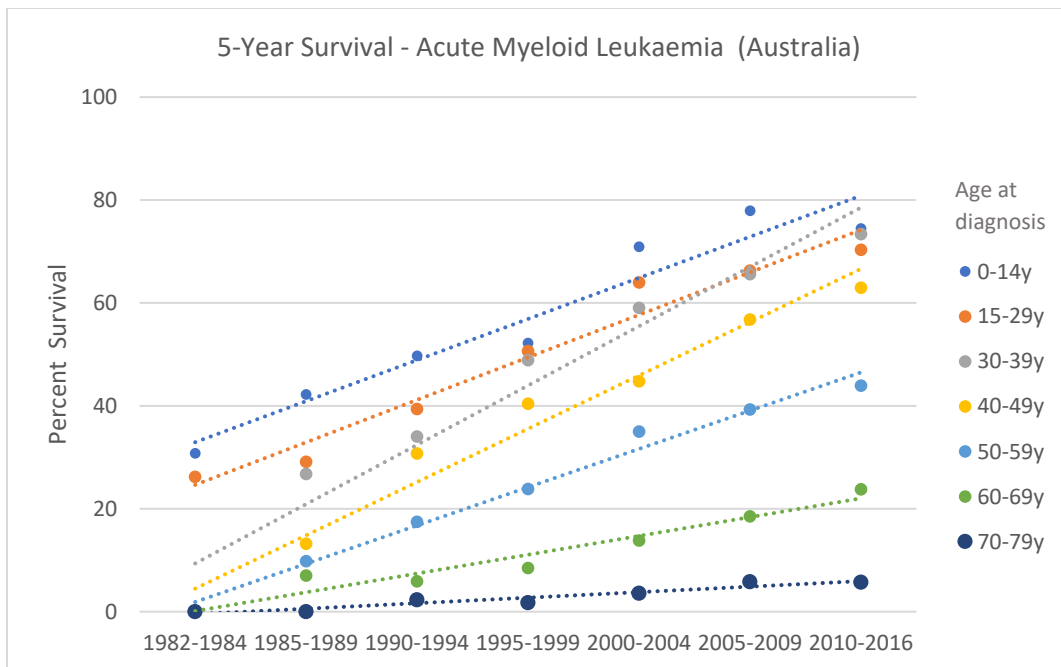
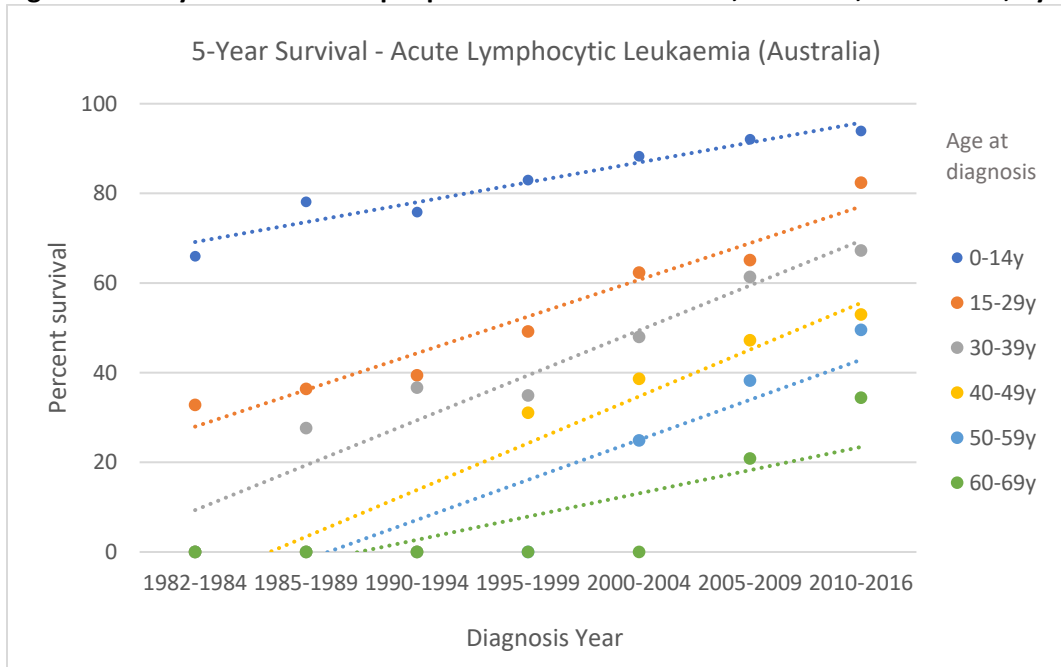
## **Supporting Information**

### **Supplementary results**

**This appendix was part of the submitted manuscript and has been peer reviewed.  
It is posted as supplied by the authors.**

Appendix to: Beckmann K, Kearney BJ, Yeung D, et al. Changes in five-year survival for people with acute leukaemia in South Australia, 1980–2016. *Med J Aust* 2022; doi: 10.5694/mja2.51423.

**Figure 1. Five-year survival for people with acute leukaemia, Australia, 1982–2016, by age group**



Note: In earlier diagnosis time periods, 5-year disease-specific survival for older age groups was zero or very close to zero. This means that several “zeros” are overlaid, and it appears there are no data points for some age groups.

**Table 1. Australian crude five-year survival for people with acute leukaemia, Australia, 1982–2016**

Factors		Acute lymphoblastic leukaemia	Acute myeloid leukaemia
		5-yr survival (95% CI)	5-yr survival (95% CI)
Total (1982–2016)	All people	62% (61–63)	18% (18–19)
Diagnosis period	1982–84	48% (44–54)	9% (7–10)
	1985–89	54% (51–57)	10% (9–11)
	1990–94	53% (50–56)	12% (11–14)
	1995–99	58% (55–60)	15% (14–16)
	2000–04	64% (62–67)	20% (19–21)
	2005–09	69% (67–72)	24% (22–25)
	2010–16	74% (72–76)	24% (23–26)
Sex (1982–2016)	Females	64% (62–65)	20% (19–20)
	Males	61% (60–62)	18% (17–18)
Age (1982–2016)	0–14yrs	84% (83–85)	60% (57–63)
	15–29yrs	56% (53–58)	53% (50–56)
	30–39yrs	46% (41–50)	52% (49–54)
	40–49yrs	36% (32–41)	44% (42–46)
	50–59yrs	30% (26–34)	30% (29–32)
	60–69yrs	18% (15–22)	13% (13–14)
	70–79yrs	9% (6–11)	4% (3–4)
Country of birth (1982–2016)	80+yrs	0 %	1% (0–1)
	Australia & NZ	65% (64–66)	19% (18–19)
	UK & Ireland	34% (29–39)	11% (10–13)
	Rest of Europe	25% (21–29)	11% (10–12)
Place of Residence (2005–2016*)	Asia	63% (57–68)	35% (32–39)
	Major cities	74% (74–78)	25% (24–26)
	Inner regional	68% (64–74)	21% (19–23)
Socioeconomic Disadvantage (2005–2016*) – quintiles	Outer regional/remote	68% (63–76)	22% (19–25)
	1 – most disadvantaged	66% (58–68)	19% (17–21)
	2	69% (63–73)	22% (20–24)
	3	73% (64–75)	25% (23–27)
	4	74% (69–79)	25% (23–27)
	5 – least disadvantaged	76% (66–77)	30% (28–32)

Compiled data provided by the Australian Institute of Health and Welfare.

\*Survival by socio-economic deprivation/place of residence not provided for earlier periods

**Table 2. Relative risk of death from any cause among people with acute leukaemia, South Australia, 1980–2016**

	<b>Acute lymphoblastic leukaemia</b> HR (95% CI)	<b>Acute myeloid leukaemia</b> HR (95% CI)	<b>All acute leukaemia</b> HR (95% CI)
<b>Age group</b>			
0–14yrs	1	1	1
15–29yrs	2.45 (1.76–3.42)	1.05 (0.70–1.59)	2.07 (1.61–2.66)
30–39yrs	4.13 (2.78–6.12)	1.41 (0.94–2.11)	2.94 (2.26–3.82)
40–49yrs	5.16 (2.95–6.82)	1.71 (1.09–2.48)	3.34 (2.62–4.26)
50–59yrs	8.98 (3.57–7.46)	2.07 (1.36–2.94)	4.01 (3.22–4.99)
60–69yrs	7.17 (6.42–12.6)	3.46 (2.13–4.87)	6.63 (5.40–8.34)
70–79yrs	13.1 (9.68–15.2)	5.41 (3.33–7.59)	10.4 (8.49–12.7)
80+yrs	25.7 (18.6–35.7)	7.59 (4.78–10.7)	15.1 (12.3–18.6)
<b>Sex</b>			
Male	1	1	1
Female	1.04 (0.87–1.25)	1.02 (0.94–1.11)	1.01 (0.94–1.09)
<b>Diagnosis period</b>			
1980–84	1	1	1
1985–89	1.15 (0.82–1.62)	0.86 (0.70–1.06)	0.89 (0.75–1.06)
1990–94	0.80 (0.57–1.12)	0.86 (0.71–1.04)	0.83 (0.70–0.97)
1995–99	0.94 (0.68–1.31)	0.85 (0.71–1.03)	0.84 (0.72–0.99)
2000–04	0.51 (0.37–0.70)	0.66 (0.55–0.79)	0.62 (0.53–0.72)
2005–09	0.41 (0.29–0.58)	0.72 (0.60–0.87)	0.64 (0.55–0.76)
2010–16	0.36 (0.26–0.50)	0.55 (0.45–0.66)	0.51 (0.44–0.59)
<b>Socioeconomic Disadvantage</b>			
Quintile1 (Most disadvantaged)	1	1	1
Quintile 2	1.46 (1.09–1.93)	0.94 (0.82–1.06)	1.00 (0.89–1.13)
Quintile 3	1.19 (0.90–1.58)	0.92 (0.80–1.05)	0.96 (0.85–1.09)
Quintile 4	1.18 (0.88–1.57)	0.96 (0.84–1.10)	1.00 (0.89–1.13)
Quintile 5 (Least disadvantaged)	1.17 (0.88–1.57)	0.89 (0.78–1.03)	0.93 (0.82–1.06)
<b>Area of residence</b>			
Metropolitan	1	1	1
Inner regional	1.06 (0.77–1.46)	0.90 (0.77–1.06)	0.92 (0.80–1.06)
Outer regional/remote	0.93 (0.66–1.29)	0.89 (0.77–1.03)	0.90 (0.79–1.03)
<b>Histological type</b>			
Acute lymphocytic	NA	NA	1
Acute myeloid			1.38 (1.24–1.54)

HR: Hazard ratio; CI Confidence interval; NA: not applicable.

**Figure 2. Allogeneic transplantations for acute leukaemia, by age group and period**

