



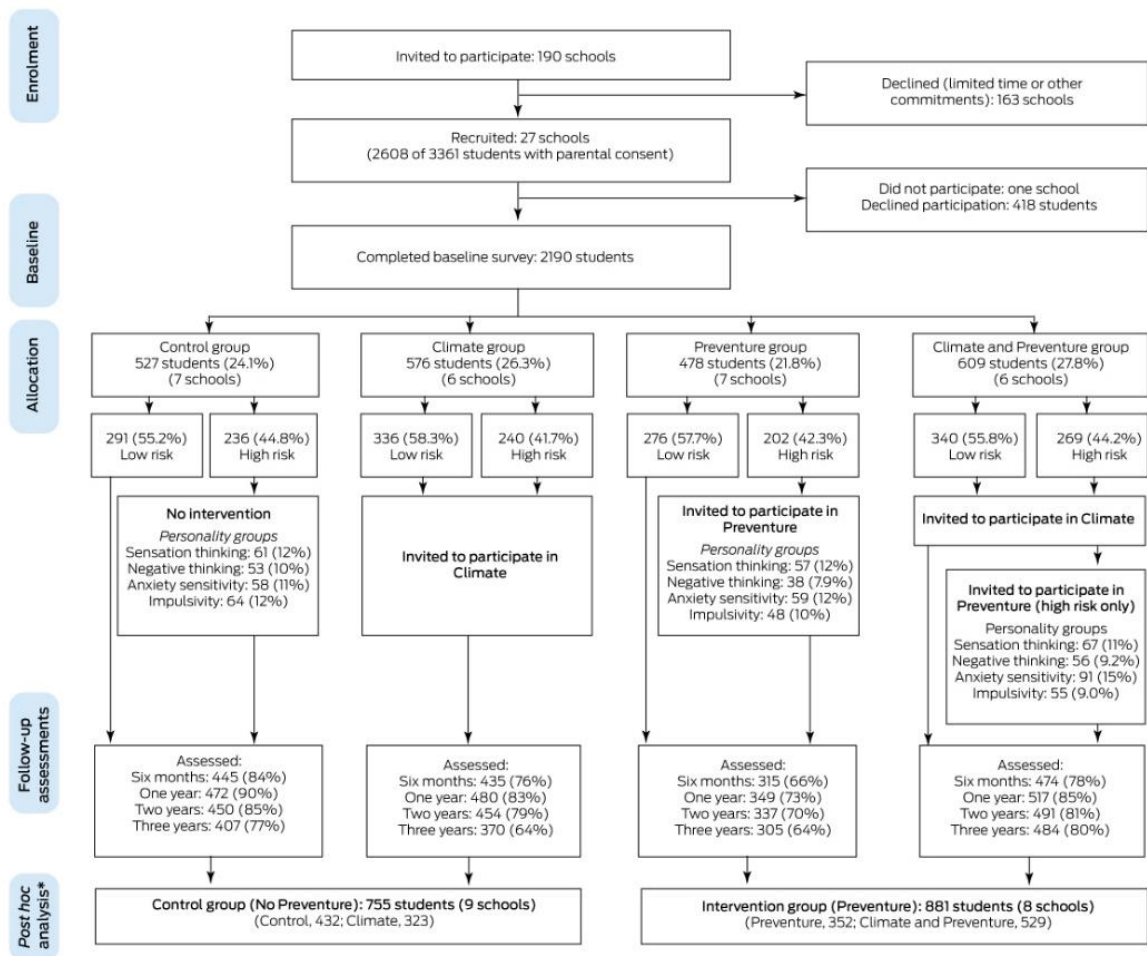
## **Supporting Information**

### **Supplementary materials**

**This appendix was part of the submitted manuscript and has been peer reviewed.  
It is posted as supplied by the authors.**

Appendix to: Grummitt LR, Debenham J, Kelly E, et al. Selective personality-targeted prevention of suicidal ideation in young adolescents: post hoc analysis of data collected in a cluster randomised controlled trial. *Med J Aust* 2022; doi: 10.5694/mja2.51536.

Figure. Consolidated Standards of Reporting Trials (CONSORT) summary of participant flow through the Climate and Preventure (CAP) study<sup>1-4</sup>



\* Independent schools only.

**Table 1. Model fit statistics for the mixed effect model for suicidal ideation (unadjusted)**

	Individual intercepts	Add school intercepts	Random slopes (independent)	Random slopes (unstructured)	Random slopes (identity)
Observations	6,228	6,228	6,228	6,228	6,228
Likelihood ratio test: $\chi^2$		21.5	42.3	7.7	61.3
LRT: df		1	1	1	1
LRT: <i>p</i>		0.000	0.000	0.006	0.000
Log-likelihood	-2936.2	-2925.5	-2904.3	-2900.4	-2935.0
Model df	5	6	7	8	6
AIC	5882.4	5862.9	5822.0	5816.9	5879.9
BIC	5916.0	5903.3	5869.1	5870.8	5922.3

AIC, Akaike information criterion; BIC, Bayesian information criterion; df, degrees of freedom, LRT, likelihood ratio test.

**Table 2. Suicidal ideation reported by students, by the original four intervention arms at baseline (year 8) and in follow-up assessments**

Assessment	Control group	Climate Schools	Prevention	Climate and Prevention
Baseline	94/418 (22%)	88/308 (29%)	79/303 (26%)	106/509 (21%)
6 months	71/349 (20%)	72/249 (29%)	39/179 (22%)	55/348 (16%)
1 year	78/376 (21%)	71/252 (28%)	43/199 (22%)	73/393 (19%)
2 years	74/355 (21%)	82/234 (35%)	44/239 (18%)	87/429 (20%)
3 years	61/309 (20%)	77/207 (37%)	37/220 (17%)	61/351 (17%)

## References

1. Newton NC, Conrod PJ, Slade T, et al. The long-term effectiveness of a selective, personality-targeted prevention program in reducing alcohol use and related harms: a cluster randomized controlled trial. *J Child Psychol Psychiatry* 2016; 57: 1056-1065.
2. Newton NC, Teesson M, Barrett EL, et al. The CAP study, evaluation of integrated universal and selective prevention strategies for youth alcohol misuse: study protocol of a cluster randomized controlled trial. *BMC Psychiatry* 2012; 12: 118.
3. Teesson M, Newton NC, Slade T, et al. Combined universal and selective prevention for adolescent alcohol use: a cluster randomized controlled trial. *Psychol Med* 2017; 47: 1761-1770.
4. Newton NC, Stapinski L, Teesson M, et al. Evaluating the differential effectiveness of social influence and personality-targeted alcohol prevention on mental health outcomes among high-risk youth: a novel cluster randomised controlled factorial design trial. *Aust N Z J Psychiatry* 2019; 54: 259-271.