



Supporting Information

Supplementary methods and results

**This appendix was part of the submitted manuscript and has been peer reviewed.
It is posted as supplied by the authors.**

Appendix to: Stengel D, Hönning A, Just S, et al. The CRECHE study: testing the urban myth that chocolate Santa Clauses are re-wrapped Easter Bunnies. *Med J Aust* 2021; doi: 10.5694/mja2.51346.

Figure 1. The Contour Resemblance Scale (CRS)

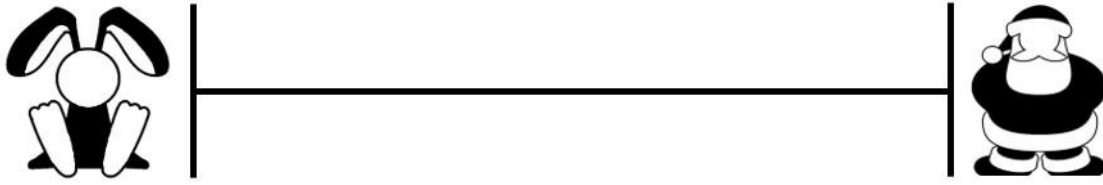


Figure 2. The Generic Risk Items Noted by Chocolate-consumers in Health care settings (GRINCH) questionnaire (English version)

Dear Participant,

The first Christmas treats are available in stores, and hollow chocolate figurines such as Santa Clauses will be a popular present in our hospitals during the coming festive season. As part of a research project and an **anonymous** survey, we would like to hear from you how you rate five statements.

Please indicate first

1. your **gender** female male diverse
 2. your **age** (years) <20 20 – 34 35 – 49 50 – 64 65 – 79 >79

and 3. the **reason** why you are here today: I am a

- patient
 relative
 other visitor
 staff member, medical
 staff member, non-medical

Let's start- please tick whether and **to what extent** you agree with statements 4 – 8:

	Strongly agree	Agree	Neutral	Disagree	Strongly disagree	Cannot say
4. I like to eat chocolate	<input type="radio"/>	<input type="radio"/>	<input type="radio"/>	<input type="radio"/>	<input type="radio"/>	<input type="radio"/>
5. Chocolate Santa Clauses are repackaged chocolate Easter Bunnies	<input type="radio"/>	<input type="radio"/>	<input type="radio"/>	<input type="radio"/>	<input type="radio"/>	<input type="radio"/>
6. Expired chocolate is harmful to health	<input type="radio"/>	<input type="radio"/>	<input type="radio"/>	<input type="radio"/>	<input type="radio"/>	<input type="radio"/>
7. Chocolate gifts should be checked for food safety in the hospital	<input type="radio"/>	<input type="radio"/>	<input type="radio"/>	<input type="radio"/>	<input type="radio"/>	<input type="radio"/>
8. I once felt uncomfortable after eating expired chocolate	<input type="radio"/>	<input type="radio"/>	<input type="radio"/>	<input type="radio"/>	<input type="radio"/>	<input type="radio"/>

We are grateful for your time – get well and stay healthy,

Your CRECHE study team

Figure 3. Figurines reconstructed with whole body computed tomography (site 1)

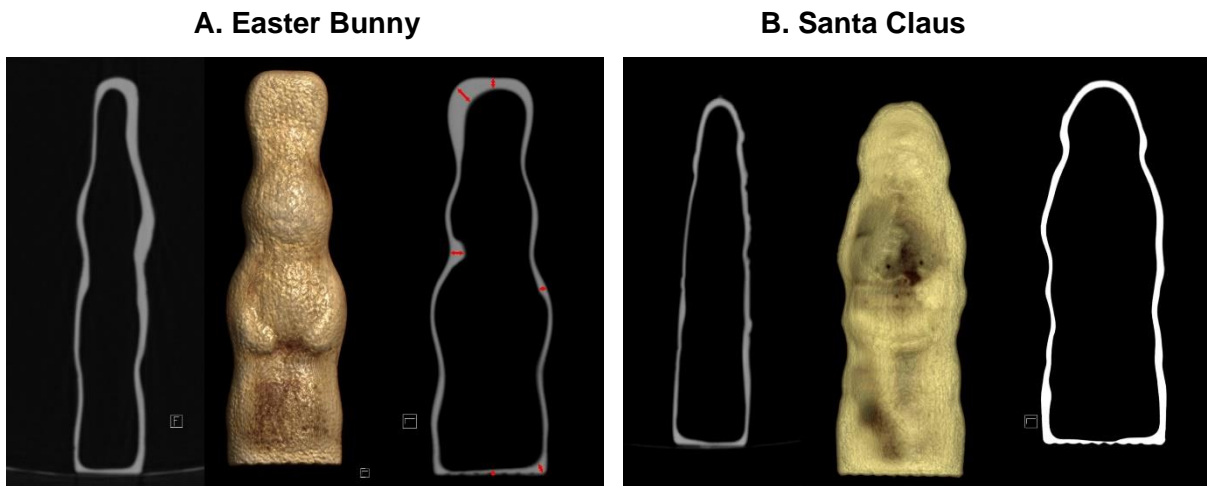


Figure 4. Figurines reconstructed with whole body computed tomography (site 2)

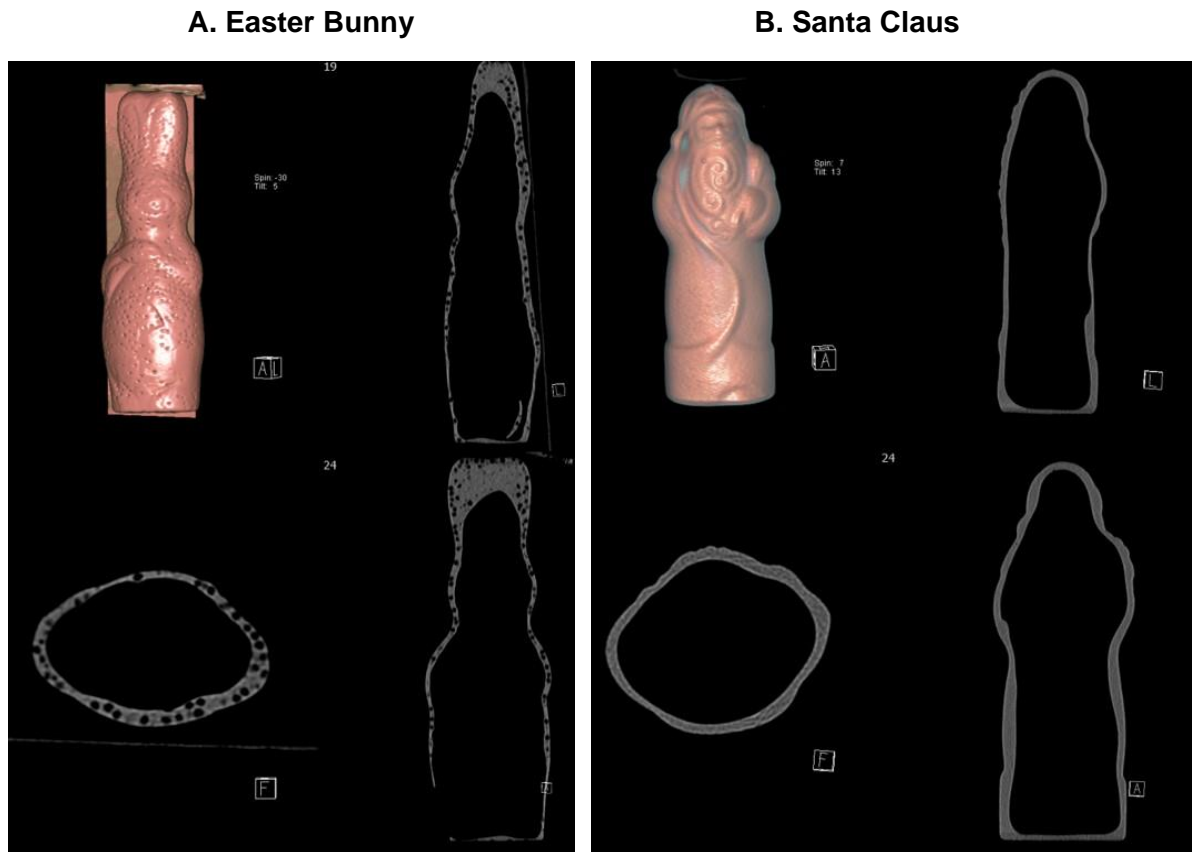


Figure 5. Individual radiologists' CRS ratings blinded to figurine type

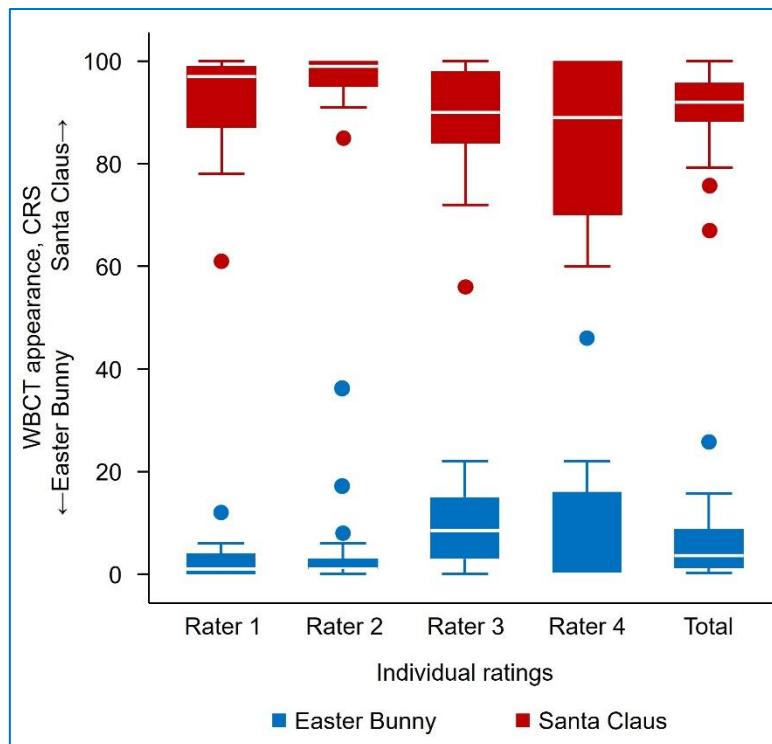


Figure 6. STROBE flowchart of GRINCH questionnaire respondents

