



## **Supporting Information**

### **Supplementary tables and figures**

**This appendix was part of the submitted manuscript and has been peer reviewed. It is posted as supplied by the authors.**

Appendix to: Mercieca-Bebber R, Costa DSJ, Norman R, et al. The EORTC Quality of Life Questionnaire for cancer patients (QLQ-C30): Australian general population reference values. *Med J Aust* 2019; doi: 10.5694/mja2.50207.

Table 1. Estimates of partial regression coefficients from multiple linear regression analysis

Model term (including sociodemographics)	Global Health/QOL			Physical Functioning			Role Functioning		
	Estimate	95%CI		Estimate	95%CI		Estimate	95%CI	
Intercept	108.402			114.47			117.144		
General health	-11.418	-12.17	-10.667	-3.998	-4.92	-3.077	-4.751	-5.888	-3.615
Sex	3.171	0.455	5.888	5.138	2.385	7.89	8.216	4.365	12.068
Age 18-29 vs 30-39	0.157	-2.877	3.191	0.621	-2.801	4.044	3.114	-1.048	7.275
Age 18-29 vs 40-49	3.356	0.558	6.154	5.048	1.908	8.188	6.655	2.397	10.912
Age 18-29 vs 50-59	3.303	0.357	6.25	4.612	1.634	7.589	9.028	5.163	12.893
Age 18-29 vs 60-69	6.618	3.558	9.679	4.975	1.781	8.169	11.549	7.148	15.949
Age 18-29 vs 70+	6.369	2.979	9.759	-1.841	-5.475	1.794	5.097	0.546	9.648
K10	-0.994	-1.091	-0.897	-0.889	-1.023	-0.756	-1.083	-1.239	-0.928
Indigenous status	-1.587	-3.976	0.802	-2.991	-5.642	-0.341	-0.804	-4.117	2.51
Comorbid arthritis/rheumatism	-3.573	-5.156	-1.989	-7.913	-9.856	-5.969	-7.405	-9.739	-5.072
Comorbid cancer	-1.099	-4.19	1.991	-1.188	-5.495	3.119	-1.574	-5.992	2.844
Comorbid diabetes	-1.214	-3.319	0.892	-6.707	-9.253	-4.161	-2.731	-5.722	0.259
Comorbid HIV	-3.083	-13.169	7.006	2.377	-15.007	19.762	2.072	-18.643	22.791
Comorbid kidney disease	-2.885	-8.241	2.47	-2.115	-9.013	4.781	-4.368	-11.872	3.136
Relationship never married vs married	2.829	1.181	4.477	-2.181	-3.92	-0.442	-3.014	-5.334	-0.694
Relationship never married vs de facto	1.691	-0.301	3.684	-5.011	-7.313	-2.709	-3.059	-5.879	-0.239
Relationship never married vs separated	3.175	-0.673	7.023	-4.794	-9.359	-0.23	-9.78	-15.671	-3.889
Relationship never married vs divorced	-0.589	-2.897	1.719	-6.576	-9.228	-3.923	-4.923	-8.446	-1.401
Relationship never married vs widowed	1.151	-2.84	5.142	-6.204	-11.302	-1.107	-6.419	-12.494	-0.344
Education Year 11 or below vs Year 12	2.339	0.155	4.523	1.772	-0.329	3.873	0.337	-2.447	3.121
Education Year 11 or below vs trade/diploma	0.587	-1.169	2.344	1.334	-0.556	3.224	-0.592	-2.961	1.776
Education Year 11 or below vs bachelors degree	0.902	-1.101	2.905	-0.729	-2.946	1.489	-1.078	-3.764	1.609
Education Year 11 or below vs higher degree	1.834	-0.483	4.151	0.833	-1.488	3.155	-0.773	-3.825	2.278
Country of birth Non-English speaking vs Australia	-0.001	-1.7	1.697	-1.126	-2.848	0.596	-3.194	-5.645	-0.743
Country of birth Non-English speaking vs English speaking (not Australia)	-0.362	-2.453	1.73	0.937	-1.11	2.984	-0.77	-3.539	1.999
sex x Age 18-29 vs 30-39	-1.467	-5.349	2.413	-1.026	-5.311	3.258	-1.681	-7.15	3.787
sex x Age 18-29 vs 40-49	-3.98	-7.391	-0.569	-2.789	-6.597	1.019	-4.403	-9.719	0.912
sex x Age 18-29 vs 50-59	-2.275	-6.022	1.471	-6.307	-10.31	-2.303	-6.398	-11.78	-1.017
sex x Age 18-29 vs 60-69	-5.092	-9.074	-1.11	-8.387	-12.293	-4.481	-10.555	-16.311	-4.799
sex x Age 18-29 vs 70+	-1.769	-5.766	2.226	-4.339	-9.032	0.355	-2.45	-7.935	3.035
Rsquared	56.1%			32.8%			26.5%		
t	29.11			15.99			12.26		
p	<0.001			<0.001			<0.001		
Model-adjusted sub-scale scores	68.50			89.17			88.79		

Table 1. Estimates of partial regression coefficients from multiple linear regression analysis

Model term (including sociodemographics)	Emotional Functioning			Cognitive Functioning			Social Functioning		
	Estimate	95%CI		Estimate	95%CI		Estimate	95%CI	
Intercept	123.223			118.805			127.905		
General health	-1.594	-2.324	-0.865	-1.102	-1.909	-0.296	-3.859	-4.901	-2.818
Sex	-4.517	-7.228	-1.805	2.607	-0.722	5.935	8.166	4.838	11.494
Age 18-29 vs 30-39	-3.057	-5.879	-0.237	-0.106	-3.481	3.269	2.317	-1.368	6.002
Age 18-29 vs 40-49	-4.648	-7.326	-1.969	1.845	-1.264	4.954	3.591	-0.252	7.433
Age 18-29 vs 50-59	-1.639	-4.122	0.844	2.481	-1.027	5.988	3.476	-0.526	7.477
Age 18-29 vs 60-69	-0.227	-3.046	2.592	-1.457	-5.006	2.093	7.672	3.575	11.768
Age 18-29 vs 70+	-0.181	-2.952	2.59	1.519	-1.998	5.036	3.664	-0.771	8.097
K10	-2.402	-2.497	-2.307	-1.744	-1.861	-1.627	-1.464	-1.609	-1.319
Indigenous status	0.052	-2.205	2.309	-3.226	-6.149	-0.304	-2.304	-5.199	0.591
Comorbid arthritis/rheumatism	-0.156	-1.633	1.321	-1.921	-3.888	0.045	-7.878	-10.2	-5.557
Comorbid cancer	0.609	-3.098	4.316	-4.513	-9.569	0.542	-0.696	-6.527	5.135
Comorbid diabetes	1.696	-0.107	3.499	0.554	-1.505	2.614	-3.529	-6.617	-0.44
Comorbid HIV	16.807	5.883	27.735	0.086	-14.063	14.234	-4.522	-22.675	13.636
Comorbid kidney disease	4.172	-1.153	9.497	-10.515	-17.553	-3.478	-8.703	-17.446	0.041
Relationship never married vs married	-1.042	-2.703	0.619	-4.26	-6.116	-2.403	-4.548	-6.772	-2.323
Relationship never married vs de facto	-0.101	-2.161	1.959	-4.172	-6.601	-1.742	-3.193	-5.837	-0.548
Relationship never married vs separated	-0.547	-4.876	3.782	-3.149	-7.663	1.365	-7.708	-12.77	-2.646
Relationship never married vs divorced	1.015	-1.237	3.266	-3.906	-6.827	-0.986	-6.951	-10.904	-2.998
Relationship never married vs widowed	0.478	-2.409	3.366	-7.083	-11.686	-2.48	-8.787	-13.757	-3.816
Education Year 11 or below vs Year 12	0.635	-1.354	2.623	1.315	-0.856	3.486	-0.025	-2.788	2.738
Education Year 11 or below vs trade/diploma	0.035	-1.659	1.729	-0.202	-2.133	1.73	-1.887	-4.233	0.46
Education Year 11 or below vs bachelors degree	0.849	-1.036	2.735	0.09	-2.079	2.259	-2.146	-4.743	0.45
Education Year 11 or below vs higher degree	0.2	-2.078	2.479	-0.338	-2.881	2.205	-1.767	-4.694	1.16
Country of birth Non-English speaking vs Australia	-0.056	-1.73	1.617	-0.403	-2.502	1.696	-4.218	-6.312	-2.125
Country of birth Non-English speaking vs English speaking (not Australia)	0.345	-1.595	2.284	2.061	-0.473	4.594	-2.578	-5.279	0.123
sex x Age 18-29 vs 30-39	3.042	-0.842	6.926	1.211	-3.025	5.447	-5.633	-10.592	-0.674
sex x Age 18-29 vs 40-49	3.538	-0.301	7.379	-3.794	-8.305	0.717	-7.656	-12.749	-2.563
sex x Age 18-29 vs 50-59	-0.507	-3.948	2.935	-3.552	-7.873	0.769	-7.97	-13.241	-2.699
sex x Age 18-29 vs 60-69	0.656	-3.21	4.522	3.989	-0.647	8.626	-6.265	-11.183	-1.347
sex x Age 18-29 vs 70+	2.169	-1.5	5.838	2.493	-2.183	7.168	-1.832	-7.025	3.363
Rsquared	65.7%			43.0%			35.8%		
t	36.7			20.43			15.86		
p	<0.001			<0.001			<0.001		
Model-adjusted sub-scale scores	80.92			87.99			90.69		

Table 1. Estimates of partial regression coefficients from multiple linear regression analysis

Model term (including sociodemographics)	Fatigue			Nausea/Vomiting			Pain		
	Estimate	95%CI		Estimate	95%CI		Estimate	95%CI	
Intercept	-14.047			-7.465			-15.304		
General health	6.059	5.184	6.933	-1.054	-1.905	-0.204	6.143	5.125	7.161
Sex	0.633	-2.392	3.658	-2.951	-6.002	0.1	-4.937	-8.226	-1.649
Age 18-29 vs 30-39	0.636	-2.356	3.627	-0.271	-3.628	3.086	-3.454	-7.013	0.104
Age 18-29 vs 40-49	-2.931	-6.146	0.283	-6.718	-9.4	-4.037	-4.099	-7.835	-0.363
Age 18-29 vs 50-59	-5.537	-8.808	-2.267	-8.105	-10.789	-5.419	-2.885	-6.907	1.136
Age 18-29 vs 60-69	-3.801	-7.038	-0.563	-7.131	-9.856	-4.405	-5.181	-9.525	-0.838
Age 18-29 vs 70+	-2.053	-5.148	1.042	-6.166	-9.099	-3.232	-4.507	-9.066	0.051
K10	1.458	1.345	1.57	0.99	0.861	1.118	1.294	1.154	1.434
Indigenous status	2.809	0.501	5.117	3.522	0.786	6.258	1.671	-1.302	4.645
Comorbid arthritis/rheumatism	3.65	1.904	5.397	1.473	-0.032	2.979	17.404	14.76	20.047
Comorbid cancer	1.024	-2.724	4.77	0.462	-3.3	4.224	6.193	0.027	12.359
Comorbid diabetes	1.512	-0.685	3.71	3.189	1.207	5.17	-1.226	-4.296	1.845
Comorbid HIV	-10.279	-24.042	3.483	18.43	2.274	34.59	-11.011	-29.489	7.463
Comorbid kidney disease	1.406	-5.724	8.536	1.566	-2.974	6.105	5.984	-4.716	16.683
Relationship never married vs married	0.225	-1.642	2.092	2.424	0.798	4.049	4.812	2.588	7.035
Relationship never married vs de facto	-0.449	-2.743	1.846	4.179	2.003	6.356	5.027	2.09	7.964
Relationship never married vs separated	2.955	-2.03	7.939	3.983	-0.13	8.096	7.384	1.479	13.289
Relationship never married vs divorced	2.992	0.27	5.713	3.617	1.326	5.908	6.139	2.472	9.806
Relationship never married vs widowed	2.153	-1.271	5.578	2.419	-0.681	5.518	6.456	1.276	11.636
Education Year 11 or below vs Year 12	-0.006	-2.36	2.348	0.634	-1.119	2.386	-2.676	-5.606	0.253
Education Year 11 or below vs trade/diploma	0.842	-1.269	2.953	0.167	-1.462	1.796	-1.101	-3.909	1.707
Education Year 11 or below vs bachelors degree	0.958	-1.453	3.37	1.673	-0.188	3.533	-3.559	-6.679	-0.439
Education Year 11 or below vs higher degree	0.797	-1.729	3.322	0.546	-1.65	2.741	-4.511	-7.878	-1.145
Country of birth Non-English speaking vs Australia	0.619	-1.564	2.802	1.907	0.292	3.522	-0.184	-2.691	2.324
Country of birth Non-English speaking vs English speaking (not Australia)	-0.907	-3.719	1.905	0.241	-1.706	2.188	-1.52	-4.702	1.661
sex x Age 18-29 vs 30-39	-1.878	-6.308	2.552	0.918	-3.844	5.679	3.225	-1.538	7.988
sex x Age 18-29 vs 40-49	2.29	-2.151	6.731	4.356	0.648	8.064	5.226	0.183	10.269
sex x Age 18-29 vs 50-59	1.925	-2.446	6.295	5.409	1.788	9.029	3.281	-1.758	8.319
sex x Age 18-29 vs 60-69	-0.858	-5.208	3.49	2.939	-0.807	6.684	6.187	0.445	11.93
sex x Age 18-29 vs 70+	-0.703	-4.868	3.462	3.191	-0.562	6.943	4.396	-1.578	10.372
Rsquared	45.8%			28.6%			38.2%		
t	23.2			12.33			19.01		
p	<0.001			<0.001			<0.001		
Model-adjusted sub-scale scores	23.91			4.61			21.77		

Table 1. Estimates of partial regression coefficients from multiple linear regression analysis

Model term (including sociodemographics)	Dyspnoea			Sleep			Appetite		
	Estimate	95%CI		Estimate	95%CI		Estimate	95%CI	
Intercept	-12.371			-14.124			-8.735		
General health	3.985	2.846	5.123	4.687	3.532	5.841	0.695	-0.311	1.7
Sex	-5.511	-9.087	-1.935	-2.254	-6.763	2.256	-1.418	-5.462	2.627
Age 18-29 vs 30-39	1	-3.39	5.39	-1.558	-6.204	3.089	1.873	-2.083	5.83
Age 18-29 vs 40-49	-5.376	-9.192	-1.56	-1.432	-6.207	3.344	-4.95	-8.759	-1.141
Age 18-29 vs 50-59	-7.63	-11.598	-3.662	-3.74	-8.607	1.126	-8.405	-12.412	-4.398
Age 18-29 vs 60-69	-5.256	-9.141	-1.369	-4.074	-9.256	1.108	-11.372	-15.024	-7.72
Age 18-29 vs 70+	-5.547	-9.672	-1.421	-6.922	-12.105	-1.74	-8.974	-13.022	-4.925
K10	0.986	0.834	1.137	1.719	1.563	1.874	1.121	0.978	1.263
Indigenous status	0.231	-3.197	3.659	2.561	-0.91	6.033	2.919	-0.124	5.963
Comorbid arthritis/rheumatism	1.825	-0.639	4.288	6.183	3.319	9.047	1.803	-0.381	3.988
Comorbid cancer	0.006	-6.136	6.146	-9.098	-15.521	-2.676	0.753	-3.745	5.251
Comorbid diabetes	6.686	3.549	9.823	0.887	-2.781	4.555	1.081	-1.389	3.551
Comorbid HIV	9.281	-18.932	37.495	1.283	-18.445	21.012	13.503	-6.323	33.327
Comorbid kidney disease	-0.184	-9.425	9.056	-5.345	-14.386	3.694	-0.244	-7.078	6.588
Relationship never married vs married	0.673	-1.573	2.919	2.798	-0.102	5.699	2.64	0.361	4.919
Relationship never married vs de facto	3.076	0.109	6.043	4.647	1.194	8.1	4.294	1.529	7.059
Relationship never married vs separated	4.253	-1.18	9.685	0.764	-5.399	6.926	1.687	-3.099	6.473
Relationship never married vs divorced	4.636	1.277	7.995	5.212	1.007	9.418	5.323	2.04	8.607
Relationship never married vs widowed	4.843	-0.689	10.374	3.754	-3.178	10.686	6.811	1.785	11.838
Education Year 11 or below vs Year 12	-0.884	-3.76	1.991	-1.208	-4.686	2.27	-1.363	-3.861	1.135
Education Year 11 or below vs trade/diploma	-0.259	-2.775	2.257	-1.625	-4.827	1.576	-0.489	-2.715	1.736
Education Year 11 or below vs bachelors degree	-1.02	-3.671	1.631	-1.125	-4.482	2.232	-1.07	-3.48	1.339
Education Year 11 or below vs higher degree	-0.878	-4.1	2.343	-2.644	-6.594	1.306	-0.659	-3.464	2.147
Country of birth Non-English speaking vs Australia	2.578	0.217	4.939	1.472	-1.696	4.64	2.059	-0.207	4.326
Country of birth Non-English speaking vs English speaking (not Australia)	1.949	-0.941	4.838	-0.12	-4.055	3.814	1.159	-1.636	3.955
sex x Age 18-29 vs 30-39	-0.982	-6.728	4.764	-0.024	-6.691	6.642	-4.391	-9.937	1.155
sex x Age 18-29 vs 40-49	1.872	-3	6.744	3.748	-2.755	10.251	-2.488	-7.489	2.512
sex x Age 18-29 vs 50-59	5.164	-0.522	10.849	7.17	0.521	13.819	2.659	-2.571	7.889
sex x Age 18-29 vs 60-69	3.543	-1.222	8.307	7.417	0.313	14.521	4.281	-0.8	9.361
sex x Age 18-29 vs 70+	7.644	1.763	13.524	4.883	-1.995	11.763	1.363	-4.121	6.847
Rsquared	21.3%			28.5%			23.5%		
t	10.38			14.67			10.44		
p	<0.001			<0.001			<0.001		
Model-adjusted sub-scale scores	11.71			24.36			8.61		

Table 1. Estimates of partial regression coefficients from multiple linear regression analysis

Model term (including sociodemographics)	Constipation			Diarrhoea			Financial problems		
	Estimate	95%CI		Estimate	95%CI		Estimate	95%CI	
Intercept	-4.105			-4.329			-17.45		
General health	-0.504	-1.477	0.47	-1.514	-2.489	-0.538	1.036	-0.04	2.112
Sex	-1.213	-5.21	2.785	0.122	-3.816	4.06	-5.792	-9.067	-2.516
Age 18-29 vs 30-39	-0.943	-5.169	3.284	1.773	-2.397	5.944	1.741	-1.997	5.479
Age 18-29 vs 40-49	-6.324	-10.142	-2.505	-3.056	-6.715	0.604	-0.355	-3.984	3.274
Age 18-29 vs 50-59	-5.889	-9.765	-2.012	-6.27	-9.731	-2.809	-1.291	-5.225	2.642
Age 18-29 vs 60-69	-6.496	-10.643	-2.348	-3.506	-7.533	0.521	-3.449	-7.457	0.56
Age 18-29 vs 70+	0.928	-3.762	5.618	-3.314	-7.247	0.619	-2.272	-6.21	1.666
K10	1.097	0.942	1.252	0.945	0.804	1.087	1.425	1.274	1.577
Indigenous status	5.505	2.183	8.826	2.643	-0.52	5.806	1.66	-1.272	4.593
Comorbid arthritis/rheumatism	3.371	1.044	5.699	3.966	1.935	5.997	4.574	2.04	7.107
Comorbid cancer	6.424	0.953	11.895	0.925	-3.916	5.765	3.32	-2.63	9.269
Comorbid diabetes	1.533	-1.275	4.34	2.733	0.216	5.25	3.983	0.907	7.059
Comorbid HIV	17.836	-4.695	40.373	25.276	9.676	40.88	32.614	14.876	50.35
Comorbid kidney disease	1.5	-8.124	11.122	1.271	-3.894	6.434	19.447	10.499	28.397
Relationship never married vs married	2.433	0.111	4.754	0.469	-1.648	2.585	0.224	-2.199	2.646
Relationship never married vs de facto	3.596	0.788	6.405	3.03	0.551	5.509	1.318	-1.618	4.253
Relationship never married vs separated	4.983	-0.482	10.448	0.522	-4.25	5.293	9.751	3.503	15.999
Relationship never married vs divorced	3.099	-0.216	6.415	0.424	-2.474	3.321	2.026	-1.859	5.911
Relationship never married vs widowed	4.112	-0.725	8.95	2.312	-2.015	6.639	3.692	-1.998	9.381
Education Year 11 or below vs Year 12	-0.62	-3.393	2.154	1.763	-0.702	4.227	-1.684	-4.347	0.979
Education Year 11 or below vs trade/diploma	0.104	-2.474	2.683	1.583	-0.395	3.56	2.894	0.435	5.352
Education Year 11 or below vs bachelors degree	1.604	-1.148	4.355	2.403	0.177	4.629	1.227	-1.483	3.936
Education Year 11 or below vs higher degree	1.19	-2.046	4.426	1.68	-1.057	4.416	2.166	-0.827	5.16
Country of birth Non-English speaking vs Australia	-2.843	-5.865	0.178	0.042	-2.109	2.192	-1.692	-4.121	0.738
Country of birth Non-English speaking vs English speaking (not Australia)	-3.605	-7.035	-0.175	0.152	-2.403	2.706	-1.541	-4.57	1.487
sex x Age 18-29 vs 30-39	1.469	-4.385	7.321	-4.516	-10.107	1.073	2.641	-2.974	8.257
sex x Age 18-29 vs 40-49	5.806	0.487	11.124	0.948	-4.108	6.003	3.575	-1.348	8.499
sex x Age 18-29 vs 50-59	5.333	0.032	10.633	0.434	-4.406	5.273	6.281	0.985	11.577
sex x Age 18-29 vs 60-69	3.431	-2.139	8.999	-1.195	-6.227	3.836	3.812	-1.082	8.705
sex x Age 18-29 vs 70+	-3.634	-9.664	2.396	-2.827	-7.729	2.074	2.447	-2.794	7.688
Rsquared	18.4%			18.9%			29.9%		
t	9.19			8.53			13.19		
p	<0.001			<0.001			<0.001		
Model-adjusted sub-scale scores	9.37			5.89			6.17		

Table 1. Estimates of partial regression coefficients from multiple linear regression analysis

Model term (including sociodemographics)	Coding of model terms
Intercept	-
General health	range 1-5
Sex	1=female; 0=male
Age 18-29 vs 30-39	1=30-39; 0=all others
Age 18-29 vs 40-49	1=40-49; 0=all others
Age 18-29 vs 50-59	1=50-59; 0=all others
Age 18-29 vs 60-69	1=60-69; 0=all others
Age 18-29 vs 70+	1=70+; 0=all others
K10	range 10-50
Indigenous status	1=indigenous; 0=non-indigenous
Comorbid arthritis/rheumatism	1=present; 0=absent
Comorbid cancer	1=present; 0=absent
Comorbid diabetes	1=present; 0=absent
Comorbid HIV	1=present; 0=absent
Comorbid kidney disease	1=present; 0=absent
Relationship never married vs married	1=married; ; 0=all others
Relationship never married vs de facto	1=de facto; ; 0=all others
Relationship never married vs separated	1=separated; ; 0=all others
Relationship never married vs divorced	1=divorced; 0=all others
Relationship never married vs widowed	1=widowed; 0=all others
Education Year 11 or below vs Year 12	1=Year 12; 0=all others
Education Year 11 or below vs trade/diploma	1= trade or diploma; 0=all others
Education Year 11 or below vs bachelors degree	1=bachelors degree; 0=all others
Education Year 11 or below vs higher degree	1=higher degree; 0=all others
Country of birth Non-English speaking vs Australia	1=Australia; 0=all others
Country of birth Non-English speaking vs English speaking (not Australia)	1=English-speaking not Australia; ; 0=all others
sex x Age 18-29 vs 30-39	product of sex and age coding above
sex x Age 18-29 vs 40-49	product of sex and age coding above
sex x Age 18-29 vs 50-59	product of sex and age coding above
sex x Age 18-29 vs 60-69	product of sex and age coding above
sex x Age 18-29 vs 70+	product of sex and age coding above
Rsquared	
t	
p	
Model-adjusted sub-scale scores	

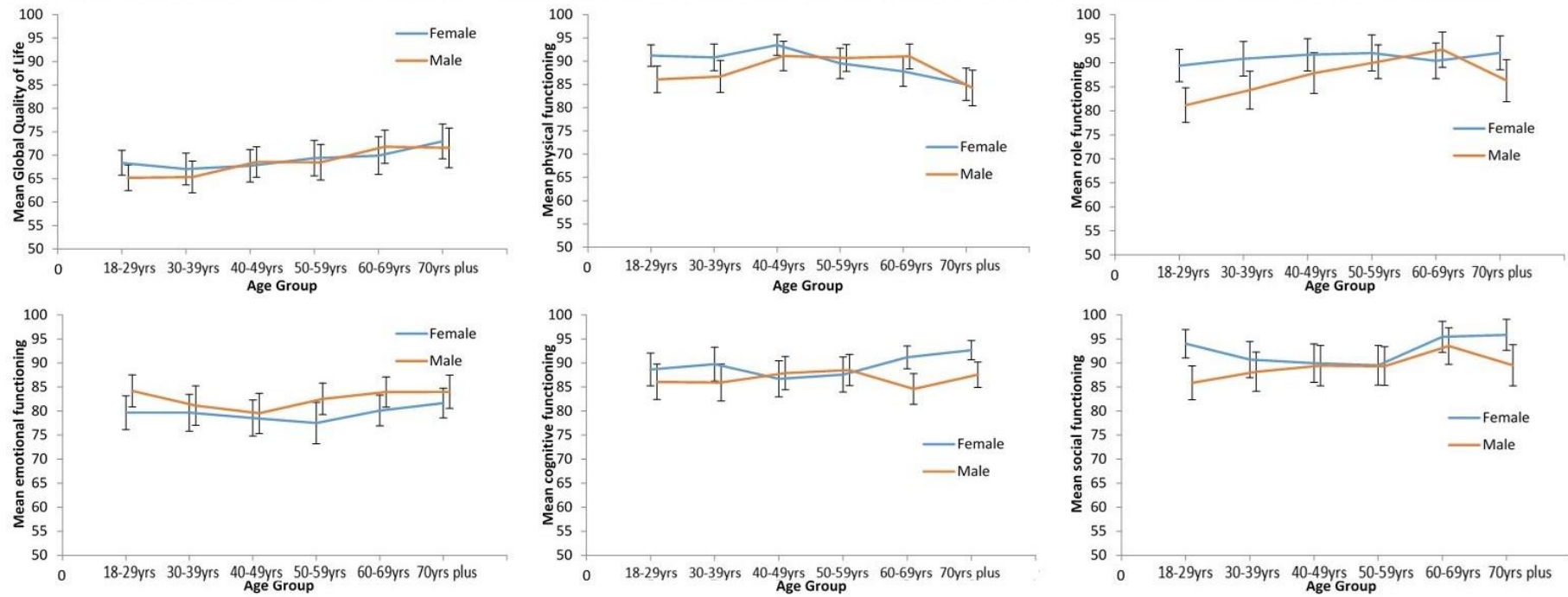
**Table 2. EORTC QLQ-C30 Australian population reference values: adjusted mean scores\* by age and sex group (N = 1821)**

Age (years)/sex group		Global QOL <sup>†</sup>	Physical functioning <sup>†</sup>	Role functioning <sup>†</sup>	Emotional functioning <sup>†</sup>	Cognitive functioning <sup>†</sup>	Social functioning <sup>†</sup>	Fatigue <sup>‡</sup>	Nausea/vomiting <sup>‡</sup>	Pain <sup>‡</sup>	Dyspnoea <sup>‡</sup>	Insomnia <sup>‡</sup>	Appetite loss <sup>‡</sup>	Constipation <sup>‡</sup>	Diarrhoea <sup>‡</sup>	Financial difficulties <sup>‡</sup>
F, 18–29 (n=197)	Mean	68.4	91.2	89.4	79.7	88.7	94.0	26.2	6.1	20.7	11.2	24.1	12.5	10.7	8.6	2.5
	SD	18.9	16.4	23.8	25.0	24.3	21.1	21.8	20.7	22.6	22.0	29.8	25.5	24.6	25.5	22.9
F, 30–39 (n=162)	Mean	67.1	90.8	90.8	79.7	89.8	90.7	24.9	6.8	20.4	11.2	22.5	10.0	11.2	5.9	6.9
	SD	21.8	18.8	23.5	24.8	22.9	24.3	23.8	22.4	24.6	21.7	31.3	24.4	24.4	20.7	28.5
F, 40–49 (n=163)	Mean	67.7	93.5	91.6	78.6	86.7	90.0	25.5	3.7	21.8	7.7	26.4	5.0	10.1	6.5	5.7
	SD	22.6	14.5	21.6	24.3	24.2	25.8	23.1	13.8	27.3	19.6	33.9	18.3	20.9	18.1	25.4
F, 50–59 (n=150)	Mean	69.4	89.5	92.0	77.5	87.6	89.5	22.6	3.4	21.1	8.7	27.5	6.7	10.1	2.8	7.5
	SD	23.4	20.3	23.2	26.7	22.7	25.6	24.0	13.0	28.8	25.6	32.2	21.9	23.5	15.3	26.9
F, 60–69 (n=123)	Mean	69.9	87.8	90.4	80.1	91.2	95.4	21.5	1.9	21.7	9.5	27.4	5.4	7.6	3.9	2.9
	SD	22.5	18.0	20.8	18.0	13.1	18.1	20.2	7.4	26.4	19.2	29.7	17.0	20.8	13.9	15.2
F, ≥ 70 (n=129)	Mean	73.0	85.0	92.0	81.7	92.7	95.9	23.4	3.1	20.6	13.3	22.0	4.9	8.0	2.5	2.7
	SD	21.3	19.8	20.2	17.6	11.4	18.5	18.8	8.3	28.2	23.6	25.3	17.2	18.3	12.5	17.4
M, 18–29 (n=205)	Mean	65.2	86.1	81.2	84.2	86.1	85.9	25.6	9.1	25.6	16.7	26.3	13.9	11.9	8.5	8.3
	SD	19.8	20.7	25.9	24.0	26.6	25.5	21.4	23.1	24.1	26.2	31.6	26.3	26.7	25.8	25.2
M, 30–39 (n=163)	Mean	65.4	86.7	84.3	81.1	85.9	88.2	26.2	8.8	22.2	17.7	24.8	15.8	10.9	10.3	10.0
	SD	21.9	22.1	25.6	26.5	24.8	26.5	23.8	23.4	25.0	28.0	30.3	26.0	27.1	27.0	27.1
M, 40–49 (n=159)	Mean	68.6	91.1	87.8	79.5	87.9	89.5	22.6	2.3	21.5	11.3	24.9	8.9	5.6	5.4	8.0
	SD	20.8	20.3	27.0	26.7	22.3	26.9	22.9	12.7	26.8	23.3	31.8	21.4	18.9	18.5	25.3
M, 50–59 (n=146)	Mean	68.5	90.7	90.2	82.5	88.5	89.3	20.0	1.0	22.7	9.1	22.6	5.5	6.0	2.2	7.0
	SD	23.3	17.8	21.5	20.1	19.8	24.5	22.4	8.6	27.4	21.2	27.5	18.0	18.4	11.7	24.9
M, 60–69 (n=118)	Mean	71.8	91.0	92.7	84.0	84.6	93.5	21.8	1.9	20.4	11.4	22.2	2.5	5.4	5.0	4.9
	SD	19.5	14.6	20.2	17.2	17.6	20.9	18.2	7.3	25.4	18.6	25.9	9.7	14.9	14.0	17.6
M, ≥ 70 (n=106)	Mean	71.6	84.2	86.3	84.0	87.6	89.5	23.5	2.9	21.1	11.1	19.4	4.9	12.8	5.2	6.0
	SD	22.0	20.0	22.7	18.0	13.7	22.1	17.2	7.0	26.8	20.3	22.8	11.7	20.4	13.1	16.8

F = female; M = male;. \* Adjusted for self-reported general health, psychological distress, country of birth, education, Indigenous status, marital status, comorbid conditions (arthritis/rheumatism, cancer, diabetes, HIV, kidney disease). † Higher health status and functional scores indicate better quality of life/functioning; ‡ Higher symptom scale scores indicate a higher level of the problem.

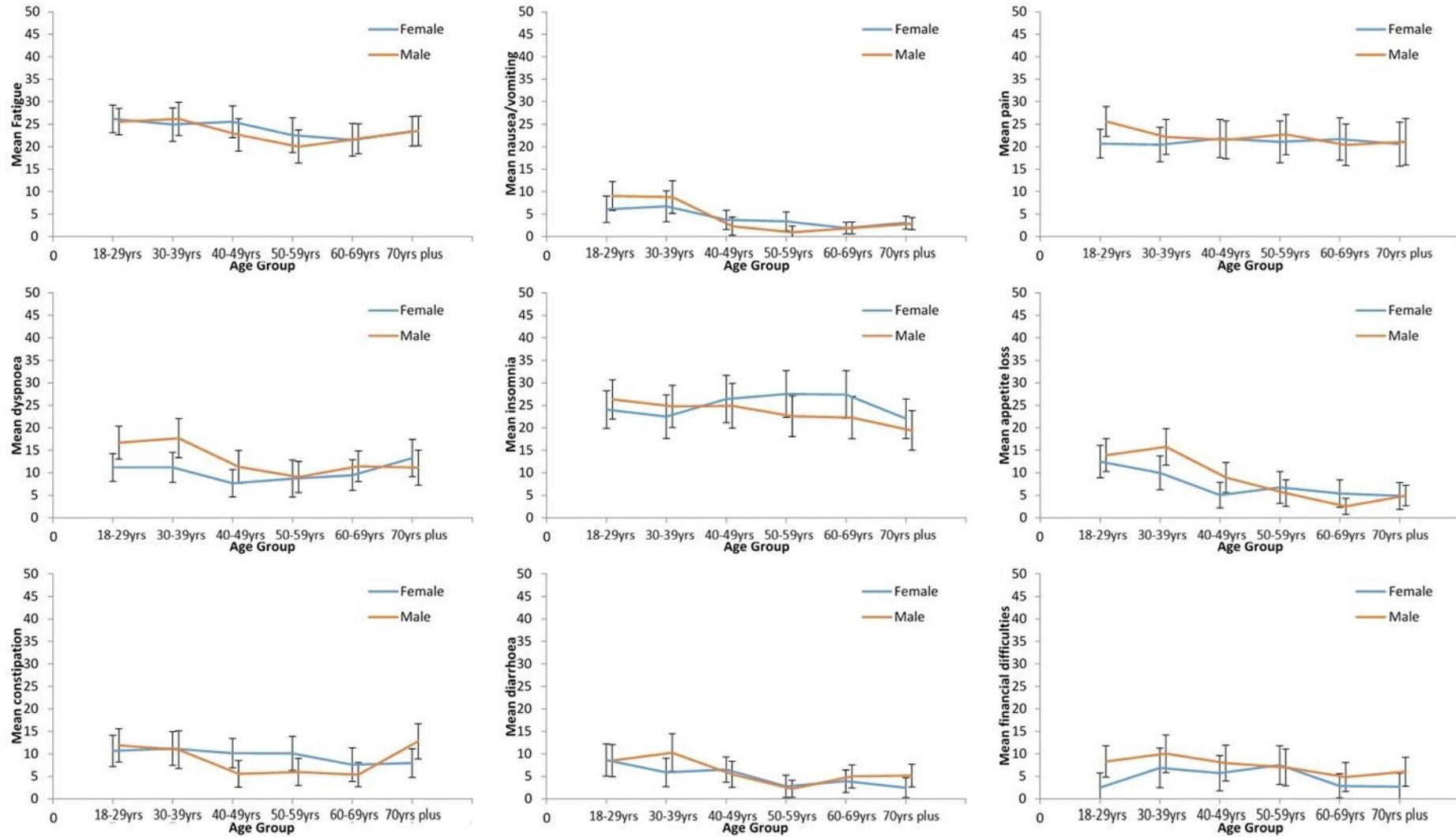


**Figure 1. EORTC QLQ-C30 adjusted means\* and 95% confidence intervals for global health/quality of life and Functioning scales by sex and age group (higher score indicates better quality of life and functioning)**



\* Adjusted for self-reported general health, psychological distress, country of birth, education, Indigenous status, marital status, comorbid conditions (arthritis/rheumatism, cancer, diabetes, HIV, kidney disease).

**Figure 2. EORTC QLQ-C30 adjusted means\* and 95% confidence intervals for symptoms and financial difficulties scales by sex and age group (higher score indicates more symptoms and financial difficulty)**



\* Adjusted for self-reported general health, psychological distress, country of birth, education, Indigenous status, marital status, comorbid conditions (arthritis/rheumatism, cancer, diabetes, HIV, kidney disease).