

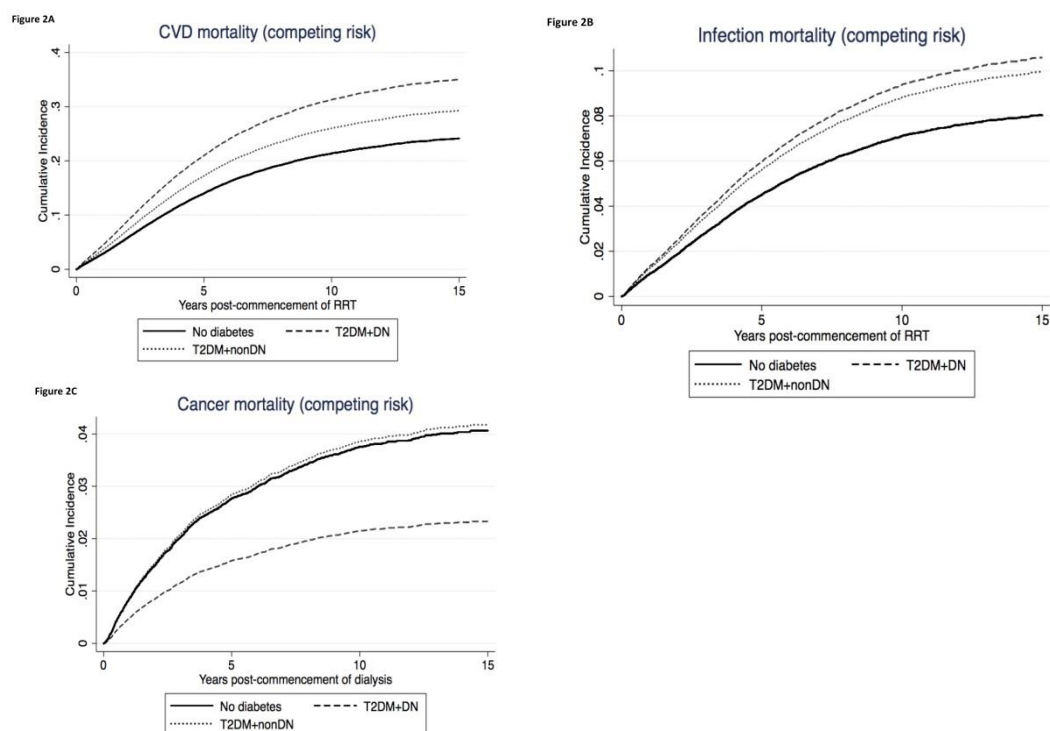


Appendix

**This appendix was part of the submitted manuscript and has been peer reviewed.
It is posted as supplied by the authors.**

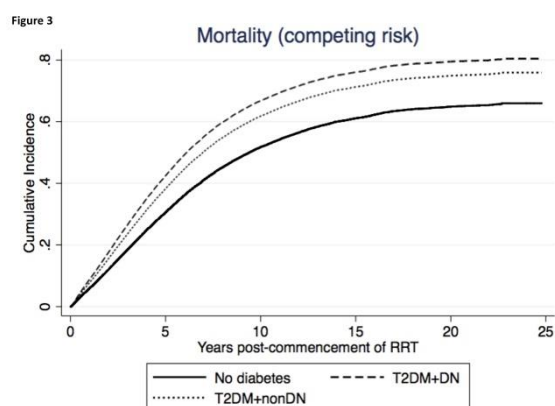
Appendix to: Lim WH, Johnson DW, Hawley C, et al. Type 2 diabetes in patients with end-stage kidney disease: influence on cardiovascular disease-related mortality risk. *Med J Aust* 2018; 209: 440-446. doi: 10.5694/mja18.00195.

Figure 1. Cumulative incidence of cardiovascular disease-related (A), infection-related (B), and cancer-related mortality (C), by diabetes status*



* Censored for kidney transplantation and respectively adjusted for the competing risks of non-cardiovascular disease-, non-infection-, or non-cancer-related mortality.

Figure 2. Cumulative incidence of all-cause mortality, by diabetes status*



* Adjusted for the competing risk of kidney transplantation.