

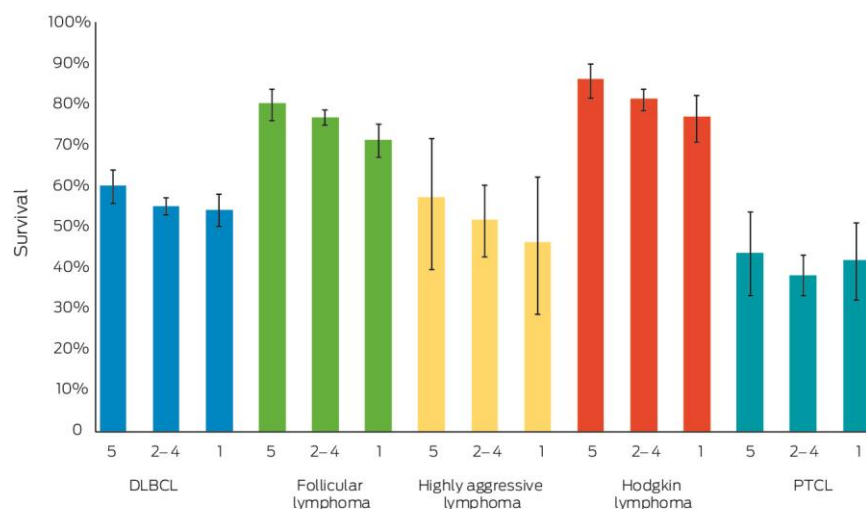


## **Appendix**

**This appendix was part of the submitted manuscript and has been peer reviewed.  
It is posted as supplied by the authors.**

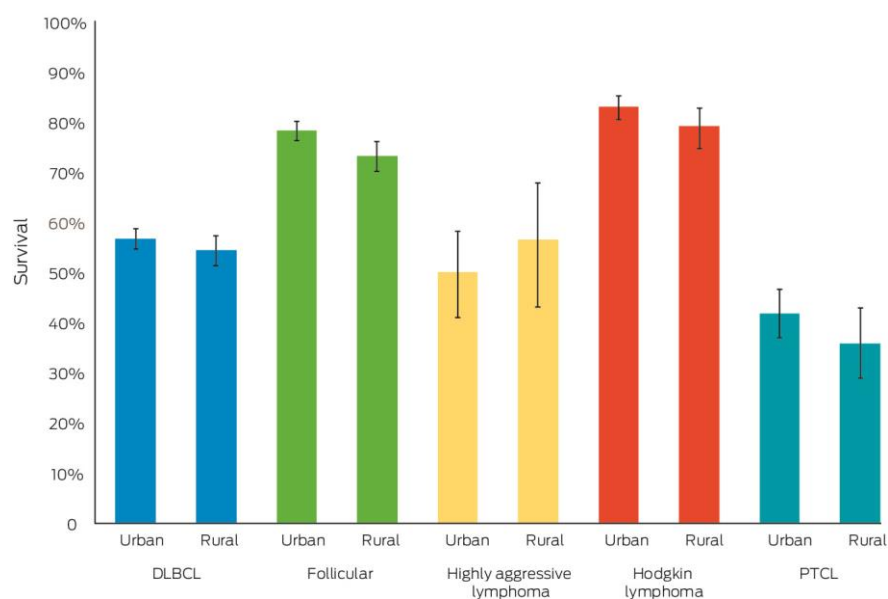
Appendix to: Wright F, Hapgood G, Loganathan A, et al. Relative survival of patients with lymphoma in Queensland according to histological subtype. *Med J Aust* 2018; 209: 177-183. doi: 10.5694/mja17.00937.

**Figure 1. Five-year relative survival (with 95% confidence intervals) of each lymphoma subtype, 1993–2012, by socio-economic status quintiles**



DLBCL = diffuse large B-cell lymphoma; PTCL = peripheral T-cell lymphoma. Socio-economic status (Index of Relative Socio-economic Disadvantage, IRSD): quintile 1, most disadvantaged; quintile 5, least disadvantaged.

**Figure 2. Five-year relative survival (with 95% confidence intervals) of each lymphoma subtype, 1993–2012, by location of residence**



DLBCL = diffuse large B-cell lymphoma; PTCL = peripheral T-cell lymphoma.

**Table. Relative survival, by lymphoma subtype: univariate analysis**

	Lymphoma histology subtype									
	Diffuse large B-cell lymphoma		Follicular lymphoma		Highly aggressive lymphoma		Hodgkin lymphoma		Peripheral T-cell lymphoma	
	HR (95% CI)	<i>P</i>	HR (95% CI)	<i>P</i>	HR (95% CI)	<i>P</i>	HR (95% CI)	<i>P</i>	HR (95% CI)	<i>P</i>
Sex										
Female	1		1		1		1		1	
Male	1.07 (0.97–1.18)	0.18	1.14 (0.97–1.34)	0.10	0.70 (0.46–1.08)	0.11	1.48 (1.15–1.92)	0.003	1.13 (0.91–1.41)	0.25
Residence										
Urban	1		1		1		1		1	
Rural	1.07 (0.97–1.19)	0.18	1.28 (1.09–1.51)	0.003	0.78 (0.50–1.22)	0.28	1.30 (1.00–1.70)	0.05	1.25 (1.01–1.56)	0.042
Socio-economic status										
Quintile 5 (least disadvantaged)	1		1		1		1		1	
Quintiles 2–4 (middle)	1.19 (1.03–1.37)	0.019	1.23 (0.97–1.56)	0.09	1.06 (0.60–1.86)	0.84	1.44 (1.00–2.08)	0.048	1.26 (0.93–1.69)	0.14
Quintile 1 (most disadvantaged)	1.24 (1.04–1.48)	0.017	1.58 (1.20–2.07)	0.001	1.19 (0.59–2.38)	0.62	1.81 (1.17–2.79)	0.008	1.18 (0.82–1.70)	0.38
Age group (years)										
15–24	0.51 (0.30–0.88)	0.015	NA	NA	0.29 (0.14–0.62)	0.001	0.14 (0.08–0.25)	< 0.001	0.12 (0.03–0.50)	0.003
25–34	0.50 (0.32–0.77)	0.002	0.49 (0.22–1.11)	0.09	0.37 (0.16–0.86)	0.020	0.11 (0.06–0.22)	< 0.001	0.53 (0.28–1.00)	0.05
35–44	0.90 (0.69–1.18)	0.46	0.67 (0.43–1.02)	0.06	0.37 (0.15–0.91)	0.030	0.24 (0.13–0.43)	< 0.001	0.86 (0.54–1.38)	0.53
45–54	0.92 (0.74–1.14)	0.44	0.61 (0.44–0.85)	0.004	0.50 (0.22–1.15)	0.10	0.34 (0.19–0.61)	<0.001	0.79 (0.53–1.18)	0.25
55–64	1		1		1		1		1	
65–74	1.73 (1.47–2.04)	< 0.001	2.15 (1.70–2.72)	< 0.001	1.35 (0.68–2.68)	0.39	2.14 (1.45–3.15)	< 0.001	2.15 (1.58–2.93)	< 0.001
75–84	3.40 (2.91–3.98)	< 0.001	3.76 (2.97–4.75)	< 0.001	1.66 (0.81–3.40)	0.17	3.18 (2.09–4.83)	< 0.001	2.58 (1.89–3.51)	< 0.001
85 or older	6.09 (5.05–7.36)	< 0.001	7.62 (5.50–10.55)	< 0.001	1.58 (0.57–4.38)	0.38	23.88 (14.01–40.68)	< 0.001	4.93 (3.07–7.90)	< 0.001
Rituximab era*										
No	1		1		1		1		1	
Yes	0.70 (0.64–0.78)	< 0.001	0.50 (0.41–0.61)	< 0.001	NA		NA		NA	
Year group										
1993–1997	1		1		1		1		1	
1998–2002	1.01 (0.88–1.17)	0.88	0.64 (0.52–0.78)	< 0.001	0.43 (0.25–0.76)	0.004	0.93 (0.64–1.36)	0.72	1.25 (0.91–1.71)	0.17
2003–2007	0.64 (0.55–0.74)	< 0.001	0.44 (0.36–0.54)	< 0.001	0.25 (0.14–0.46)	< 0.001	0.79 (0.55–1.14)	0.21	1.14 (0.84–1.55)	0.41
2008–2012	0.64 (0.55–0.74)	< 0.001	0.29 (0.23–0.38)	< 0.001	0.38 (0.22–0.66)	0.001	1.20 (0.84–1.70)	0.32	1.42 (1.05–1.91)	0.022

HR = hazard ratio; NA = not applicable. \* For diffuse large B-cell lymphoma: from July 2003 for patients aged 60 years or more, from April 2005 for those under 60; for patients with untreated advanced stage follicular lymphoma: from December 2006.