



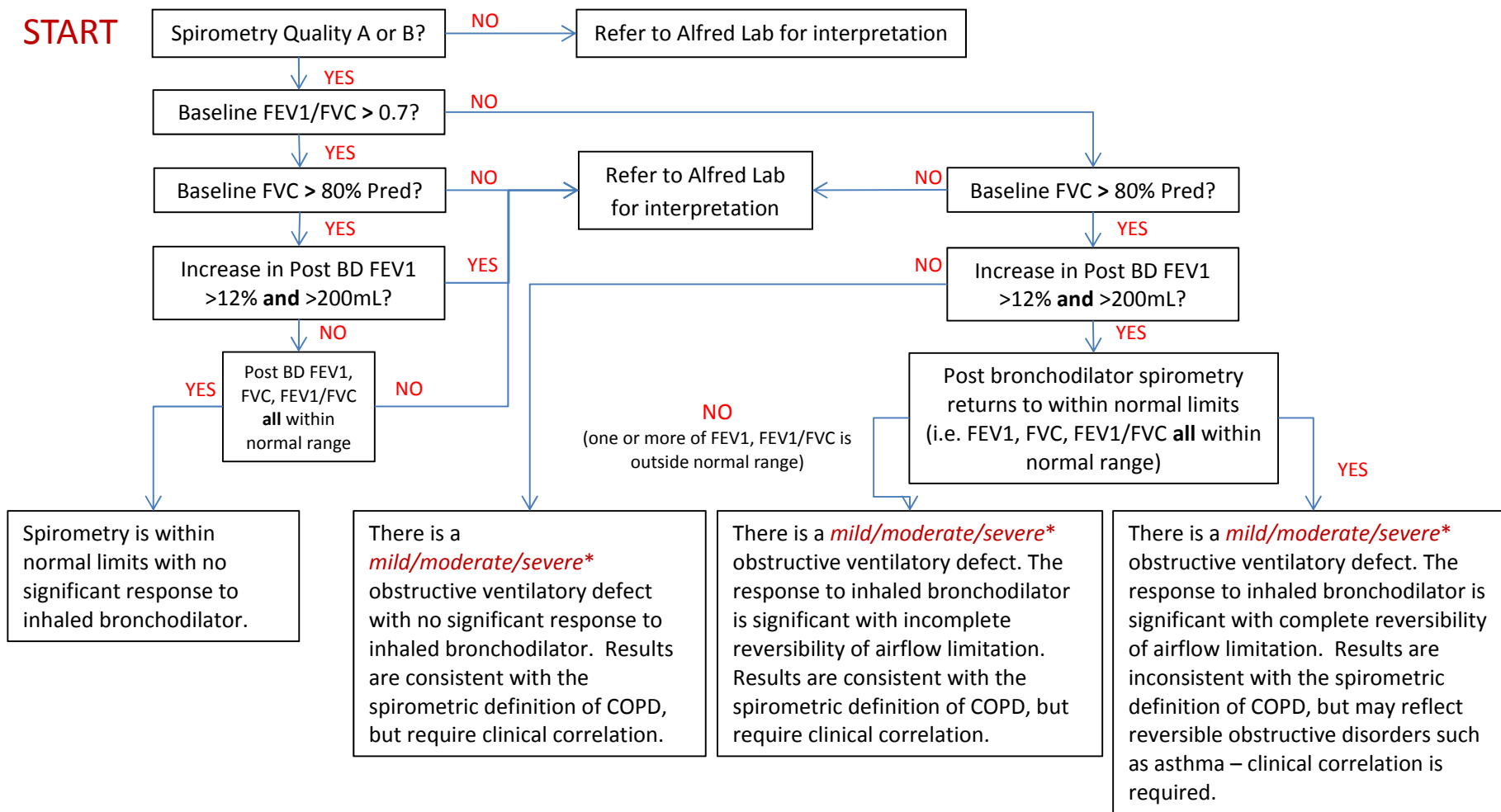
Appendix 1

**This appendix was part of the submitted manuscript and has been peer reviewed.
It is posted as supplied by the authors.**

Appendix to: Liang J, Abramson MJ, Zwar NA, et al. Diagnosing COPD and supporting smoking cessation in general practice: evidence–practice gaps. *Med J Aust* 2018; 208: 29-34. doi: 10.5694/mja17.00664.

Appendix 1: Algorithm for interpretation of spirometry readings in RADICALS trial^{1,2}

START



Normal Ranges:

FEV₁/FVC > 0.7
FVC > 80% Pred
FEV₁ > 80% Pred

* Mild/moderate/severe

MILD: Post bronchodilator FEV1 (60 - 80%) predicted

MODERATE: Post bronchodilator FEV1 (40 - 59%) predicted

SEVERE: Post bronchodilator FEV1 <40% predicted

Note: if FEV1%pred>80% - do not insert a ranking. i.e. There is an obstructive ventilatory defect.

1. Yang IA, Dabscheck E, George J, Jenkins S, McDonald CF, McDonald V, et al. The COPD-X Plan: Australian and New Zealand Guidelines for the management of Chronic Obstructive Pulmonary Disease 2016. Version 2.48. December 2016.
2. Pellegrino R, Viegi G, Brusasco V, Crapo RO, Burgos F, Casaburi R, et al. Interpretative strategies for lung function tests. The European Respiratory Journal. 2005;26(5):948-68.