



## **Appendix**

**This appendix was part of the submitted manuscript and has been peer reviewed. It is posted as supplied by the authors.**

Appendix to: Beck B, Cameron P, Fitzgerald MC, et al. Road safety: serious injuries remain a major unsolved problem. *Med J Aust* 2017; 207: 244-249. doi: 10.5694/mja17.00015.

## SUPPLEMENTARY MATERIAL

Table 1: Crude incidence rate per 100,000 population (95% confidence intervals) and number of cases of hospitalised road traffic major trauma over the period of 2007 to 2015.

		All road traffic cases	Motor vehicle occupant	Motorcyclist	Pedal cyclist	Pedestrian
2007	Incidence	15.2 (14.2, 16.3)	8.7 (7.9, 9.5)	3.0 (2.6, 3.6)	1.2 (0.9, 1.5)	2.3 (1.9, 2.7)
	N	785	447	157	60	117
2008	Incidence	15.9 (14.9, 17.0)	9.0 (8.2, 9.8)	3.2 (2.7, 3.7)	1.4 (1.1, 1.7)	2.3 (1.9, 2.8)
	N	837	471	166	72	122
2009	Incidence	15.7 (14.6, 16.8)	8.6 (7.8, 9.4)	3.1 (2.7, 3.6)	1.5 (1.2, 1.9)	2.3 (2.0, 2.8)
	N	842	461	167	83	126
2010	Incidence	16.2 (15.1, 17.3)	8.5 (7.8, 9.3)	3.1 (2.7, 3.6)	1.8 (1.5, 2.2)	2.6 (2.2, 3.0)
	N	883	466	171	98	140
2011	Incidence	17.3 (16.3, 18.5)	10.1 (9.3, 11.0)	3.2 (2.7, 3.7)	1.7 (1.4, 2.1)	2.2 (1.8, 2.6)
	N	960	562	176	95	122
2012	Incidence	16.5 (15.4, 17.6)	9.4 (8.6, 10.2)	3.0 (2.5, 3.5)	1.9 (1.6, 2.3)	2.0 (1.7, 2.5)
	N	929	528	167	109	115
2013	Incidence	17.3 (16.3, 18.5)	9.2 (8.5, 10.1)	3.0 (2.6, 3.5)	2.1 (1.8, 2.5)	2.8 (2.4, 3.3)
	N	995	530	172	121	161
2014	Incidence	14.3 (13.4, 15.4)	7.6 (6.9, 8.4)	2.7 (2.3, 3.1)	2.0 (1.7, 2.4)	2.0 (1.6, 2.4)
	N	838	446	156	118	115
2015	Incidence	16.8 (15.8, 17.9)	8.9 (8.2, 9.7)	3.2 (2.7, 3.7)	2.3 (1.9, 2.7)	2.3 (1.9, 2.7)
	N	997	528	188	137	137

Table 2: Disability-adjusted life years and costs of all road traffic deaths and major trauma (2007 to 2015).

Year	All road traffic cases	YLLs	YLDs	Summary measure		Total Cost (million A\$)	Cost per case (million A\$)
				DALYs	DALYs per case		
2007	1047	7592	2251	9843	9.4	1791.5	1.71
2008	1075	6881	2281	9163	8.5	1667.6	1.55
2009	1073	6398	2303	8702	8.1	1583.7	1.48
2010	1095	6170	2356	8526	7.8	1551.7	1.42
2011	1183	6151	2583	8734	7.4	1589.6	1.34
2012	1175	6293	2466	8759	7.5	1594.2	1.36
2013	1193	4939	2559	7498	6.3	1364.6	1.14
2014	1036	5139	2213	7351	7.1	1337.9	1.29
2015	1215	5962	2612	8574	7.1	1560.4	1.28
Overall	10092	55526	21624	77150	7.7	14041.3	1.40

Note: cases reflect deaths and in-hospital major trauma survivors. YLL: years of life lost; YLD: years lived with disability; DALY: disability-adjusted life year.

Table 3: Disability-adjusted life years and costs for motor vehicle occupants.

Year	Motor vehicle occupants	YLLs	YLDs	Summary measure		Total Cost (million A\$)	Cost per case (million A\$)
				DALYs	DALYs per case		
2007	636	5179	1322	6501	10.2	1183.1	1.86
2008	630	4516	1292	5807	9.2	1056.9	1.68
2009	632	4546	1276	5822	9.2	1059.5	1.68
2010	624	4366	1255	5621	9.0	1023.0	1.64
2011	706	3962	1514	5476	7.8	996.6	1.41
2012	708	4381	1386	5767	8.1	1049.6	1.48
2013	667	3159	1378	4537	6.8	825.8	1.24
2014	582	3429	1173	4603	7.9	837.7	1.44
2015	683	4265	1368	5633	8.2	1025.2	1.50
Overall	5868	37803	11963	49766	8.5	9057.4	1.55

Note: cases reflect deaths and in-hospital major trauma survivors. YLL: years of life lost; YLD: years lived with disability; DALY: disability-adjusted life year.

Table 4: Disability-adjusted life years and costs for motorcyclists.

Year	Motorcyclists	YLLs	YLDs	Summary measure		Total Cost (million A\$)	Cost per case (million A\$)
				DALYs	DALYs per case		
2007	194	1102	507	1610	8.3	292.9	1.51
2008	200	950	523	1473	7.4	268.1	1.34
2009	196	830	504	1334	6.8	242.7	1.24
2010	208	1062	484	1545	7.4	281.3	1.35
2011	219	1065	531	1596	7.3	290.5	1.33
2012	201	962	492	1454	7.2	264.6	1.32
2013	207	900	479	1379	6.7	251.0	1.21
2014	180	667	466	1133	6.3	206.3	1.15
2015	208	563	538	1101	5.3	200.4	0.96
Overall	1813	8100	4525	12625	7.0	2297.7	1.27

Note: cases reflect deaths and in-hospital major trauma survivors. YLL: years of life lost; YLD: years lived with disability; DALY: disability-adjusted life year.

Table 5: Disability-adjusted life years and costs for pedal cyclists.

Year	Pedal cyclists	YLLs	YLDs	Summary measure		Total Cost (million A\$)	Cost per case (million A\$)
				DALYs	DALYs per case		
2007	64	206	151	356	5.6	64.8	1.01
2008	78	238	206	444	5.7	80.8	1.04
2009	86	101	228	329	3.8	59.8	0.70
2010	103	134	280	413	4.0	75.3	0.73
2011	103	227	250	478	4.6	87.0	0.84
2012	113	110	293	402	3.6	73.2	0.65
2013	125	132	332	465	3.7	84.5	0.68
2014	124	138	313	451	3.6	82.1	0.66
2015	141	179	377	556	3.9	101.2	0.72
Overall	937	1465	2430	3895	4.3	708.9	0.78

Note: cases reflect deaths and in-hospital major trauma survivors. YLL: years of life lost; YLD: years lived with disability; DALY: disability-adjusted life year.

Table 6: Disability-adjusted life years and costs for pedestrians.

Year	Pedestrians	YLLs	YLDs	Summary measure		Total Cost (million A\$)	Cost per case (million A\$)
				DALYs	DALYs per case		
2007	140	897	264	1161	8.3	211.3	1.51
2008	160	1173	248	1421	8.9	258.7	1.62
2009	152	910	279	1190	7.8	216.6	1.42
2010	151	583	330	913	6.0	166.2	1.10
2011	148	883	283	1166	7.9	212.3	1.43
2012	141	802	277	1079	7.7	196.4	1.39
2013	183	748	351	1100	6.0	200.2	1.09
2014	147	904	255	1160	7.9	211.0	1.44
2015	166	786	320	1106	6.7	201.3	1.21
Overall	1388	7686	2610	10296	7.5	1873.9	1.36

Note: cases reflect deaths and in-hospital major trauma survivors. YLL: years of life lost; YLD: years lived with disability; DALY: disability-adjusted life year.

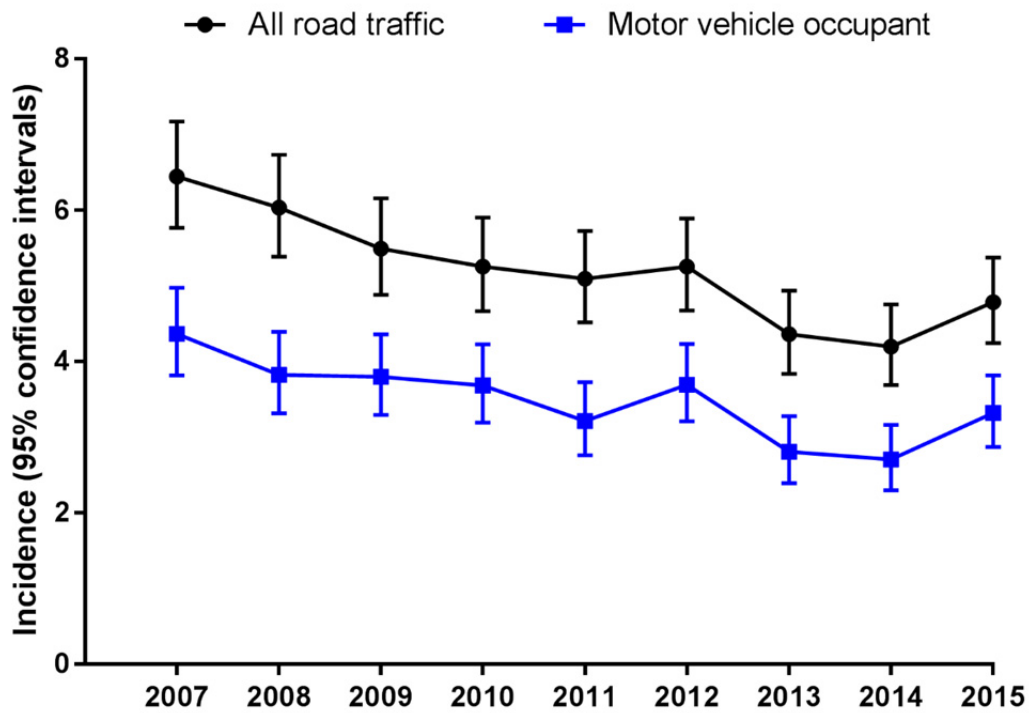


Figure 1: Incidence per 100,000 population (with 95% confidence intervals) over the period of 2007 to 2015 all road traffic deaths and motor vehicle occupant deaths.

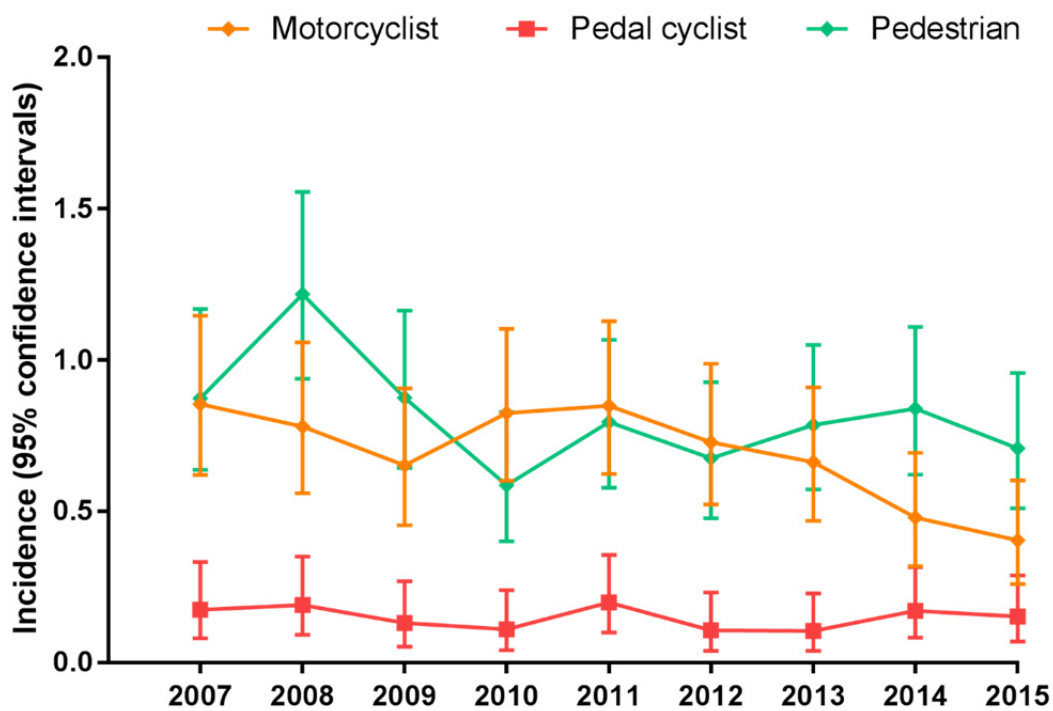


Figure 2: Incidence per 100,000 population (with 95% confidence intervals) over the period of 2007 to 2015 for motorcycle, pedal cycle and pedestrian deaths.