



Appendix 2

This appendix was part of the submitted manuscript and has been peer reviewed. It is posted as supplied by the authors.

Appendix to: Moayyedi P, Yuan Y, Baharith H, Ford AC. Faecal microbiota transplantation for *Clostridium difficile*-associated diarrhoea: a systematic review of randomised controlled trials. *Med J Aust* 2017; 207: 166-172. doi: 10.5694/mja17.00295.

Appendix 2. Randomised control trials comparing the effectiveness of faecal microbiota transplantation for curing *Clostridium difficile*-associated diarrhoea with treatment with vancomycin or placebo: serious adverse events

Figure. Comparison of rates of serious adverse events

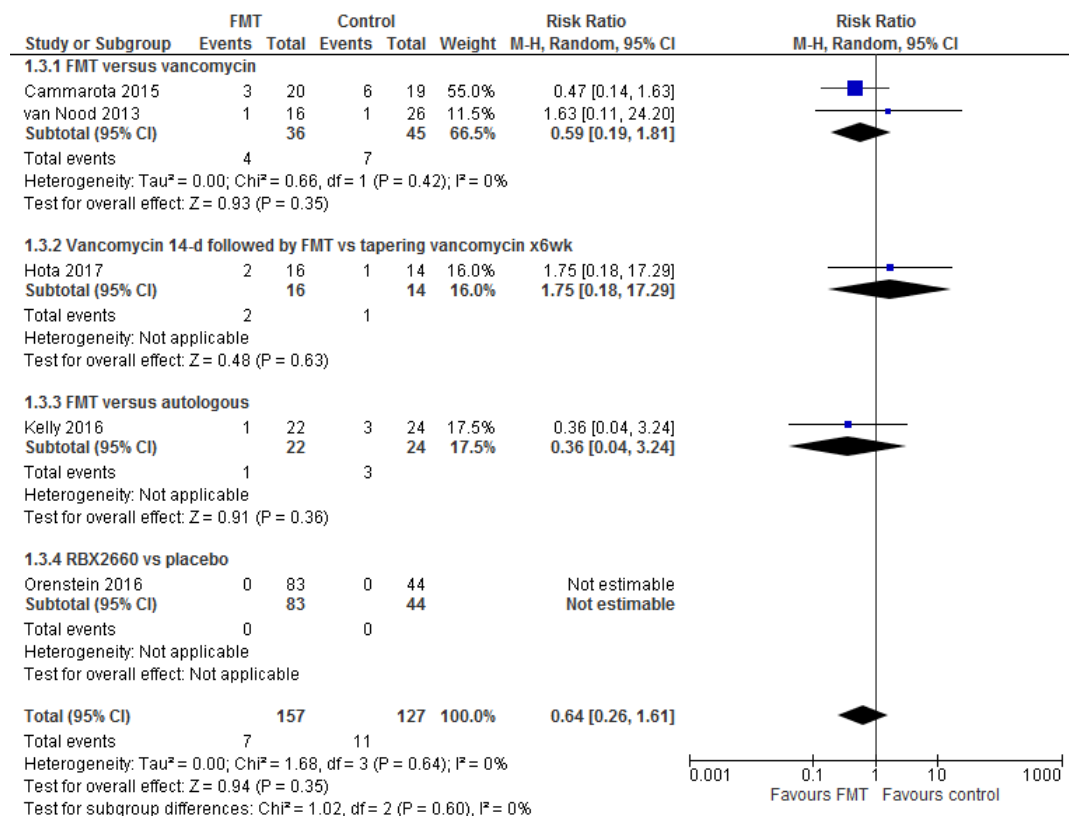


Table. Details of serious adverse events in the two trial arms

	FMT	Control
Cammarota 2015	FMT AE Bloating 60% participants FMT serious AE 2/20 died of C. Diff 1/20 died unrelated	Vancomycin AE Unclear if any AE Vancomycin serious AE 2/19 died C Diff 2/19 died unclear cause 2/19 died unrelated
Van Nood 2013	FMT AE 5/16 abdominal cramps 3/16 belching 1/16 nausea FMT serious AE 1/16 admitted with gallstones	Vancomycin AE 1/19 dyspepsia 1/19 increased rheumatoid arthritis pain 1/19 constipation Vancomycin serious AE 1/19 died unrelated to C diff
Hota 2017	FMT AE 5/16 fatigue 4/16 nausea 6/16 abdominal pain 6/16 bloating 0/16 skin rash FMT serious AE 1/16 end stage liver disease 1/16 perforated diverticulum 35 days after FMT	Vancomycin AE 5/14 fatigue 3/14 nausea 5/14 abdominal pain 6/14 bloating 1/14 skin rash Vancomycin serious AE 1/14 hospitalized with a urinary tract infection
Kelly 2016	FMT AE 1/22 20lb increase in weight 1/22 benign pulmonary nodule 1/22 recurrence rectal cancer 1/22 increase shoulder pain 1/22 improvement in dry mouth FMT serious AE 1/22 post polypectomy bleed 4 months after FMT	Autologous FMT AE None recorded Autologous serious AE 3/24 admitted to hospital with diarrhea (2 C diff negative)
Orenstein 2016	"AEs were primarily gastrointestinal. There were no significant differences in the proportion of AEs between the three groups"	"AEs were primarily gastrointestinal. There were no significant differences in the proportion of AEs between the three groups"