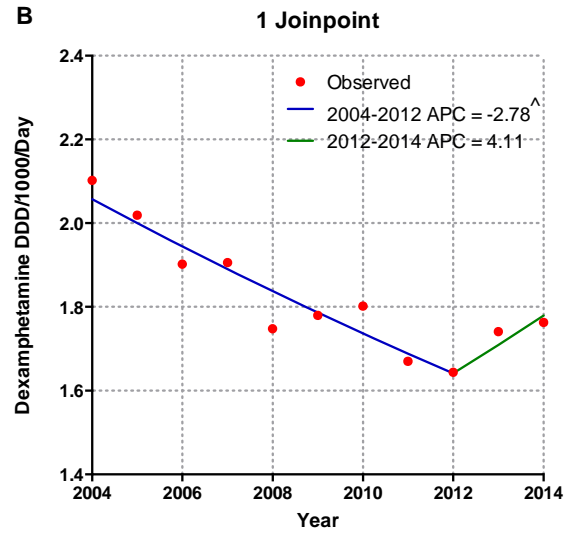
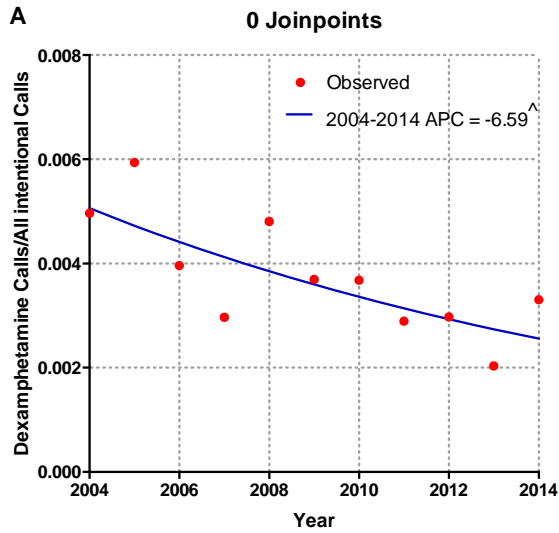




## Appendix 2

**This appendix was part of the submitted manuscript and has been peer reviewed.  
It is posted as supplied by the authors.**

Appendix to Cairns R, Daniels B, Wood DA, Brett J. ADHD medication overdose and misuse: the NSW Poisons Information Centre experience, 2004–2014. *Med J Aust* 2016; 204: 154. doi: 10.5694/mja15.00791.



**Appendix 2:** Dexamphetamine Joinpoint regression analysis. A: Dexamphetamine exposures (adjusted for all intentional calls), versus year. B: Dexamphetamine DDD/1000/Day versus year. Lines represent trends, with line colours changing where joinpoints were identified. A blue line only represents a monotonic trend.

APC, annual percent change; <sup>^</sup>, APC is significantly different from zero ( $p < 0.05$ )