

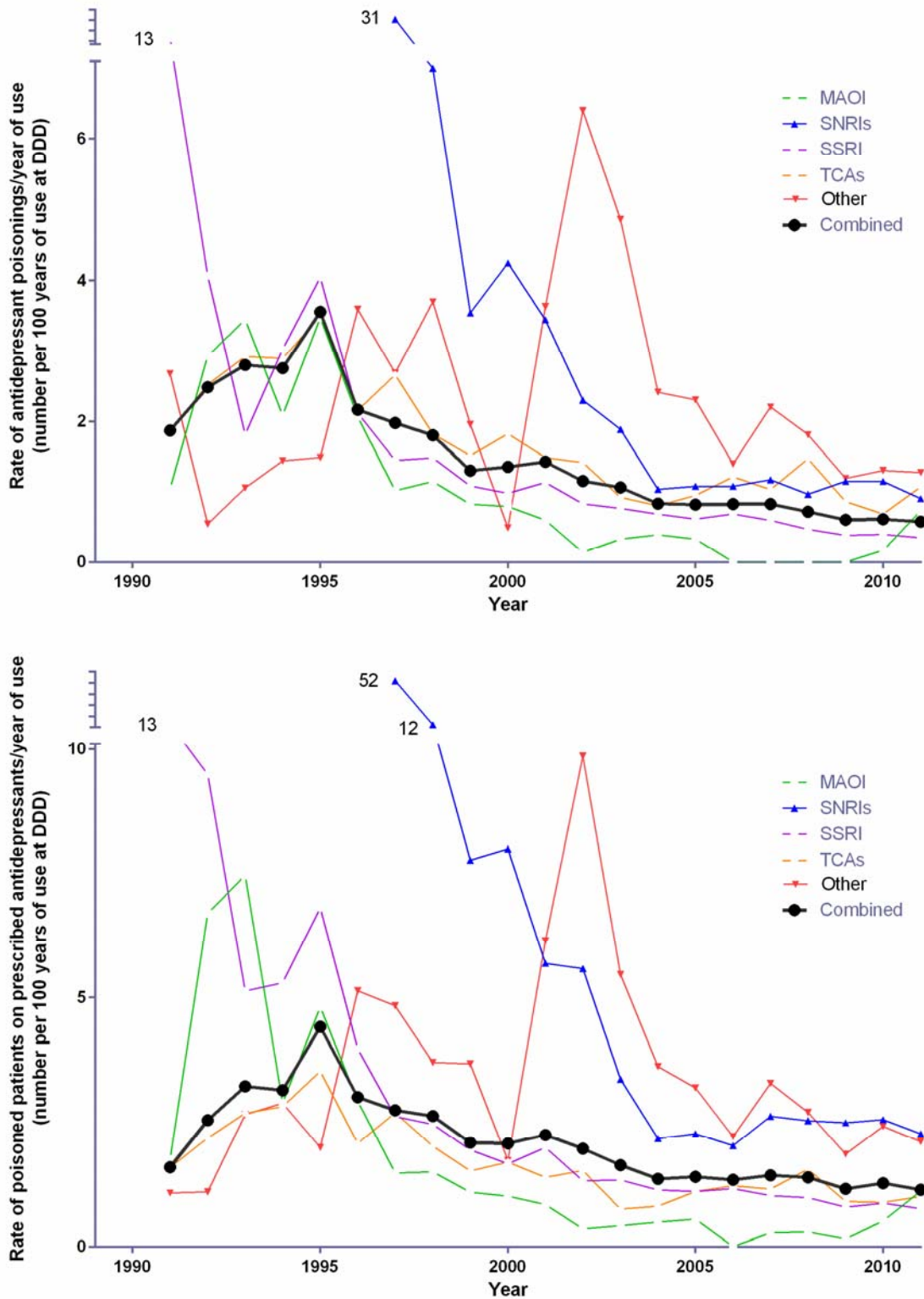


## Appendix 7

**This appendix was part of the submitted manuscript and has been peer reviewed.  
It is posted as supplied by the authors.**

Appendix to: Buckley NA, Whyte IM, Dawson AH, Isbister GK. A prospective cohort study of trends in self-poisoning, Newcastle, Australia, 1987–2012: plus ça change, plus c'est la même chose. *Med J Aust* 2015; 202: Online first 27 April 2015. doi: 10.5694/mja mja14.01116.

**Figure S5:** Antidepressant poisonings (A) and poisoned patients on antidepressants (B) /year of use at DDD. (Population of Newcastle, Lake Macquarie and Port Stephens used for calculation. Australian rates of use assumed to be applicable within this division)



Footnote: In the first year of use very high rates were generated for SNRIs and SSRIs due to a few cases but very low prescribing volumes (these have been cut off). TCAs: tricyclic antidepressants;

MAOIs: monoamine oxidase inhibitors; SSRIs: serotonin specific reuptake inhibitors; SNRIs: serotonin noradrenaline reuptake inhibitors; DDDs/1000/day= defined daily doses/1000 people/day.