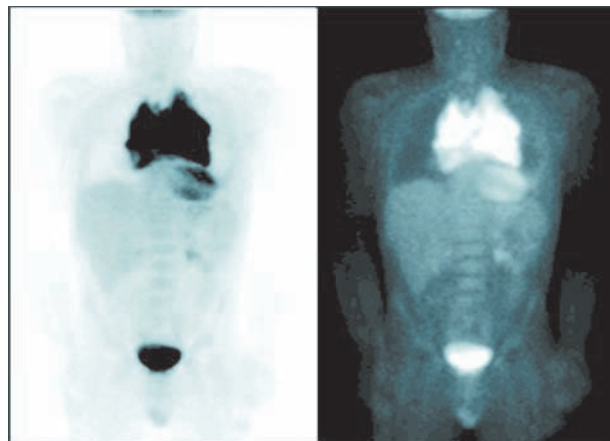


CHRISTMAS OFFERINGS

**"Australian"
lymphoma**



A positron emission tomography scan of this patient's lymphoma revealed a surprisingly "Australian" distribution of disease.



Colin KF Tan, Research Fellow
Tim Y Demetriades, Diagnostic Radiologist and Specialist in Nuclear Medicine
Department of Radiology, Southern X-Ray Clinics, Brisbane, QLD.
ctan@med.usyd.edu.au □