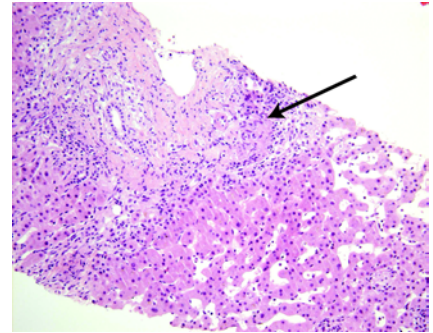


Correction

Re: "Nocardia asteroides pneumonia with bacteraemia", a letter by Figgis PA, Glanville AR, Harkness JL, in the 4 August 2003 issue of the Journal (Med J Aust 2003; 179: 171-172).

The image in Box 3 should have shown the histological appearance of a liver biopsy, not the published lung biopsy. The correct image appears in the Box.

3: Liver biopsy in a patient with *Nocardia asteroides* pneumonia



Core biopsy of liver, showing a granuloma within the central portal triad (arrow); the portal ducts are expanded and fibrosed with a patchy lymphocytic infiltrate (original magnification x 40; haematoxylin and eosin stain).